

PSNE Directory August 2011-12



Presbytery of Southern New England
123 Elm St., #200
Old Saybrook, CT 06475
860/388-0874
860/388-5813 (fax)
800-889-8257 (for church use only)

www.psnz.org

Synod of the Northeast
Presbyterian Church (U.S.A.)

Table of Contents

Mission Statement	2
Officers/Staff	3
Meeting Dates	4
Frequently Used Numbers	4
Presbytery Structure	5
Clusters	6
Past Moderators	7
Serving Synod/GA.....	8
Prayer Calendar	9
Reference Codes for Presbytery	14
Presbytery Council	15
Church Development	17
Committee on Ministry	18
Committee on Representation	20
Committee on Preparation for Ministry	21
Ecclesiastical Relations.....	22
Nominations	23
Permanent Judicial Commission	24
Personnel	25
Social Justice	26
Stewardship & Mission	27
Trustees	28
Youth Ministries	29
Ecclesiastical Occupation Codes	30
Clergy	31
Churches	56
Self-Forming Communities/Fellowships .	68
Surviving Spouses	69
Directions to PSNE	70
Directions to Mercy Center	71
Index	72

Presbytery Mission Statement



As the Presbytery of Southern New England, we will:

Glorify and enjoy God together;

Love and care for one another as individuals and congregations;

Empower congregations and individuals to share the good news of Jesus

Christ at home and throughout the world.

2011-2012 OFFICERS

Moderator

Rev. Martha Highsmith
31 Hilltop Drive
West Hartford, CT 06107
203/432-2675 (o) 860/561-4793 (h) 203/627-0659 (c)
Martha.highsmith@yale.edu

Vice-Moderator

Rev. Frank Poole
89 Robin Hollow Rd.
W. Greenwich, RI 02817-2374
401/294-1120 (o)
401/397-4794 (h)
fhpoole@cox.net

President of the Corporation

Elder William Schimpf
52 Mustang Drive
Shelton, CT 06484
203/395-5329 (cell/best#) 203/926-0775 (h)
wps59@hotmail.com

Stated Clerk/Secretary of Corporation

Elder William G. Thomas
156 Walker Brook Road, S.
New Milford, CT 06776
860/354-3129 (h)
860/354-3149 (hfax)
wgthomas01@snet.net (preferred)
billthomas@psne.org (PSNE)

Recording Clerk

Rev. Julia Fuller
P.O. Box 127
Ashaway, RI 02804
401/322-1740 (h)
revjaf@cox.net

Treasurer

Elder Tom Taylor
4 Tanglewood Trail
Darien, CT 06820
203/655-6371 (h) 203/722-1068 (cell)
twtay@aol.com

Asst. Treasurer

Elder John Succo
17 Doyle Rd.
Waterford, CT 06385
860/442-0783
jasucco@sbcglobal.net

STAFF

Executive Presbyter

Rev. Dana F. Lindsley
123 Elm Street, #200
Old Saybrook, CT 06475
860/388-0874 (o) 860/388-5813 (o fax)
860/510-2110 (cell)
203/245-4778 (h) 203/384-5995 (h fax)
danalindsley@psne.org

Stated Clerk

Elder Bill Thomas
156 Walker Brook Road, S.
New Milford, CT 06776
860/354-3129 (h) 860/354-3149 (hfax)
wgthomas01@snet.net (preferred)
billthomas@psne.org (PSNE)

Office Manager

Pam Garner
860/388-0874 (o)
860/526-3603 (h)
860/304-9104 (cell)
pamgarner@psne.org

Office Assistant

Milly Mead
860/388-0874 (o)
860/388-1428 (h)

Financial Secretary

Dayle Larson
860/388-0874 (o)
daylelarson@psne.org

STATED MEETINGS

September 10, 2011
Yale Divinity School
New Haven, CT

May 5, 2012
TBD

November 12, 2011
Warwick, RI: Greenwood

September 8, 2012
Wilton, CT: WPC

February 11, 2012
TBD

November 10, 2012
TBD

FREQUENTLY USED NUMBERS/ADDRESSES

PRESBYTERY OF SOUTHERN NEW ENGLAND

123 Elm Street, #200
Old Saybrook, CT 06475
860/388-0874; 860/388-5813 (fax)
www.psne.org

SYNOD OF THE NORTHEAST

Elder Mary Lynn Flowers, Exec. for
Administration/Stated Clerk
5811 Heritage Landing Drive
E. Syracuse, NY 13057
800/585-5881 www.synodne.org

PRESBYTERIAN CHURCH (U.S.A.)

100 Witherspoon Street,
Louisville, KY 40202-1396
888/728-7228 (People)
800/872/3283 (Information)
800/524-2612 (Resources)

MINISTRY RESOURCE CENTER

Carolyn Harden Englehardt, Director
Yale Divinity School
409 Prospect Street
New Haven, CT 06510
203/432-5319

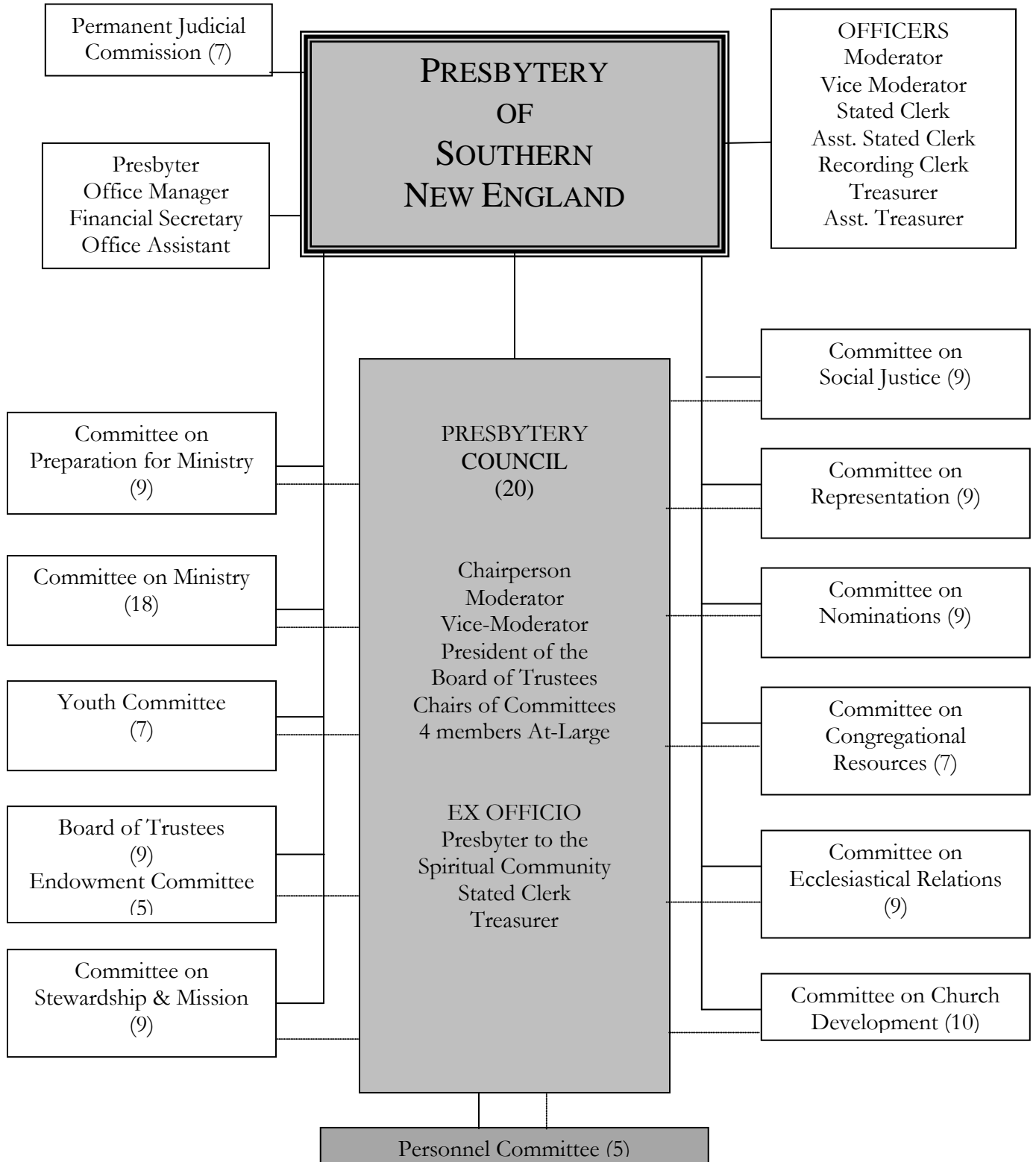
PRESBYTERIAN CHURCH (U.S.A.) FOUNDATION

6937 Tuscany Drive, Macungie, PA 18062
800/514-3839 deh@fdn.pcusa.org

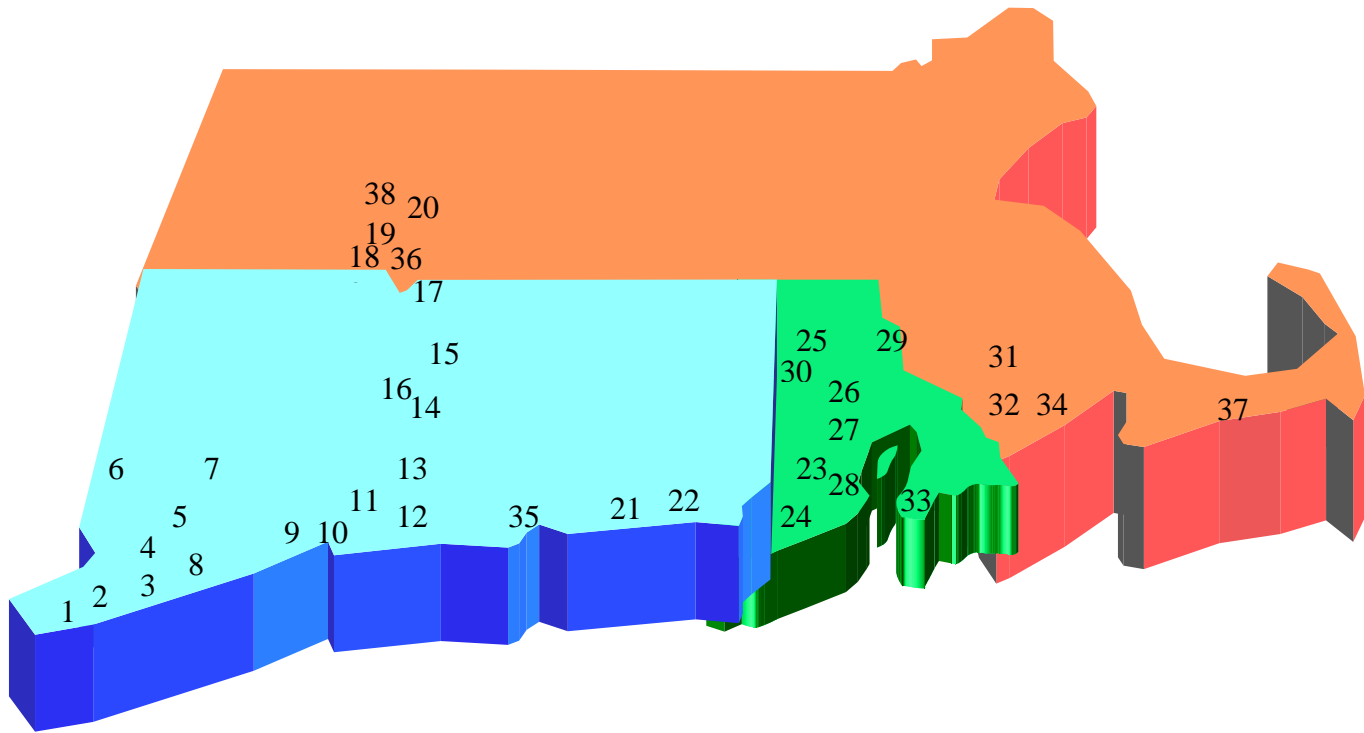
BOARD OF PENSIONS

Allison Seed, Regional Representative
2000 Market Street, Philadelphia, PA 19103
800/773-7752 (member services) or
215/587-7445 (member advocate)

PRESBYTERY STRUCTURE



CLUSTERS



WESTERN CLUSTER

1. Greenwich: First
2. Old Greenwich: Old Greenwich
3. Stamford: First
4. Stamford: Turn of River
5. New Canaan: First
6. Brookfield: Valley
7. Wilton: Wilton
8. Darien: Noroton
9. Fairfield: First
10. Milford: United
11. New Haven: CT Korean
12. New Haven: First
13. Hamden: New Haven Korean

NORTHERN CLUSTER

14. West Hartford: Hartford Korean
(formerly Manchester: Korean)
15. Hartford: First
16. West Hartford: Westminster
17. Enfield: Calvary
18. Springfield: Christ
19. Springfield: MLK
20. Granby: Pioneer Valley

EASTERN CLUSTER

21. Waterford: Crossroads
22. Groton: St. Andrew
23. Ashaway: Babcock
24. Westerly: Dunn's Corners
25. Cumberland: Calvin
26. Cranston: Faith
27. Warwick: Greenwood
28. Warwick: Woodbury Union
29. Barrington: Barrington
30. Providence: Providence
31. Fall River: Calvary
32. Fall River: United Parish
33. Newport: First
34. Fall River: Christ is Life
35. Presbytery Office: Old Saybrook

New Church Development

36. Springfield: Tumaini Pres. Fellowship

Self-Forming Community/Fellowship

37. Hyannis Fellowship
38. Northampton



PAST MODERATORS

ELDER ELDON D. WEDLOCK, 1977
THE REV. THOMAS F. CONBOY, JR. 1978
ELDER RITA GEHRENBECK, 1979
ELDER ELMER McVEY, 1980
THE REV. DR. RONALD JAMES, 1981
ELDER DR. ELLSWORTH A. STARRING, 1982
THE REV. DR. T. GUTHRIE SPEERS, 1983
THE REV. DR. VIRGINIA SULLIVAN, 1984
THE REV. DR. JOHN FUHRMEISTER, 1985
ELDER JAMES W. TOWER, 1986
THE REV. CRAIG L. PEEL, 1987
ELDER EVELYN FERGUSON, 1988
THE REV. DR. BLAIR MOFFETT, 1989
ELDER DR. SUNG HWAN KO, 1990
THE REV. EDWARD HARDING, 1991
ELDER JAMES TRUCKSESS, 1992
THE REV. FRANCES C. PEEL, 1993
ELDER JOHN KNAUTH, 1994
THE REV. ROSS LUDEMAN, 1995
ELDER JEAN HAGER, 1996
THE REV. THOMAS F. CONBOY, JR., 1997
ELDER PHILIP LUCKHARDT, 1998
REV. ANN BEAMS, 1999
REV. FUAD BAHNAN, 2000
ELDER SHIRLEY PREY, 2001
ELDER JOHN SUTOR, 2002
REV. JOAN WITHERS PRIEST, 2003
REV. JOHN C.B. WEBSTER, 2004
ELDER SHIRLEY DUDLEY, 2005
ELDER JOHN HARTER, 2006
REV. MARILYN McNAUGHTON, 2007
REV. STEVE THAYER, 2008
ELDER JUDY BABCOCK, 2009
ELDER TOM TAYLOR, 2010

**PSNE PRESBYTERIANS SERVING
SYNOD AND GENERAL ASSEMBLY**

GENERAL ASSEMBLY:

The next General Assembly will be held
June 30-July 7, 2012 in
Pittsburgh, PA

SERVING THE SYNOD:

Class of 2011 (term exp. 10/11)
Elder Judy Babcock
Rev. Tom Conboy

Class of 2012 (term exp. 10/12)
Rev. Ned Castner
Elder Judy Cunningham (Brookfield)

PRESBYTERIAN PARTNERSHIP GROUP (PPG):

Elders Judy Babcock (10/11); Revs. Ned Castner (10/12) and Tom Conboy (10/11);
Emily Oshinskie ('10) (YAD); Rev. Dana Lindsley (ex officio)

SYNOD MIDDLE GOVERNING BODY (MGB) REPRESENTATIVES

(appointed by PSNE Council 2/16/11)

Rev. John C.B. Webster; Elder Tom Taylor

IN MISSION SERVICE:

Elder Nancy Collins (Providence PC, Providence, RI)
serving in East Africa as Regional Liaison



PRAYER CALENDAR

2011-2012

By committing ourselves to this weekly prayer for and with one another in ministry, we acknowledge the many ways we are a Presbytery together as we place before God our gratitude and concerns for how we are forwarding the cause of Christ in our various ministries.

August	7	Valley Presbyterian Church, Brookfield, CT (Rev. Mark Horton, Interim; Rev. Johanna Johns Jung, parish associate); Revs. Jeffrey Wood and Robert Alter (Honorably Retired); Kathleen Davies (Candidate Ready to Receive a Call from New Haven: First)
	14	Dunn's Corners Presbyterian Church, Westerly, RI (Rev. Jim Glenn); Yale Divinity School and Institute of Sacred Music (Rev. Thomas Troeger); Revs. Thomas Witter and Sam Baez (Honorably Retired)
	21	United Parish of Fall River, MA (Rev. Stan Duncan, UCC); Calvin Presbyterian Church, Cumberland, RI, (Rev. Michael Prewitt, Interim); CT AIDS Resource Coalition (Rev. John Merz); The Development Center (Rev. Frances Unsell); Revs. Ann Beams and Barbara Sterling Willson (Honorably Retired); Rev. Jennifer Davis at Yale New Haven Chaplaincy; Sharon Anderson (CPM Inquirer from New Haven: First).
	28	Calvary Presbyterian Church, Enfield, CT (Rev. Steve Thayer); Second Congregational Church, Greenwich, CT (Rev. Chris Tate); Amherst Chinese Christian Church (Rev. David Teague); Revs. Frank West and Murray Blackadar (Honorably Retired)
September	4	Korean Presbyterian Church of Greater Hartford, Manchester, CT (Rev. Sun Gil Kim); Greenwich Chaplaincy Services (Rev. Heather P. Wright); Revs. Ed Brooks and John Webster (Honorably Retired); Bruce Incze (Candidate Ready to Receive a Call from Newport)
	11	Presbytery meeting on Saturday, September 10, Yale Divinity School, New Haven, CT; Revs. Bob Veon and Virginia Brooks (Honorably Retired); Presbyterian Immigrant Ministry (Rev. Gerson Annunciacao)
	18	Presbytery Council, Moderator Rev. Marilyn McNaughton; Yale New Haven Hospital (Rev. Christine Delmar, Chaplain); Revs. Ed Castner and Dick Van Deusen (Honorably Retired); Heidi Park (Candidate Ready to Receive a Call from New Haven: Korean)
	25	Westminster Presbyterian Church, W. Hartford, CT (Rev. Graham Robinson, Rev. gretchen Sausville; Rev. Susan Trucksess, Rev. John Merz, Rev. Tracy Mehr-Muska, parish associates); U.S. Air Force Chaplaincy Program (Rev. Rob Sugg); Revs. Holmes Van Derbeck and Wilson Chang (Honorably Retired)
October	2	Our Presbytery staff: Rev. Dana Lindsley, Elder Bill Thomas, Dayle Larson, Milly Mead, Pam Garner; United Presbyterian Church, Amenia, NY (Rev. Eileen Epperson); Revs. Kingsbury Chase and Richard Unsworth (Honorably Retired); Jae Hyek Lee (CPM Inquirer from New Haven: CT Korean)
	9	Presbyterian Church of Old Greenwich, Old Greenwich, CT (Rev. Bill Gestal); Louisville Theological Seminary (Rev. Claudio Carvalhaes); Revs. Susan Trucksess and Tom Conboy (Honorably Retired)
	16	Babcock Presbyterian Church, Ashaway, RI (Rev. Marilyn McNaughton); Turn of River Presbyterian Church, Stamford, CT (Rev. James Mahan); Babson College (Rev. Thomas Sullivan); Revs. Ed Couch and Ralph Sundquist (Honorably Retired); Elizabeth Anderson (CPM Candidate from Darien: Norton)
	23	Wilton Presbyterian Church, Wilton, CT (Rev. Jane Field, parish associate); Yale Divinity School (Rev. John Lindner); Revs. Ed Danks and Ed Soares (Honorably Retired)
	30	Martin Luther King, Jr. Community Center, one of Presbytery's missions; Park Congregational Church, Norwich, CT (Rev. Barbara Therese); Lutheran Services NY Alliance (Rev. Dan Mena, Chaplain); Revs. Dick Dannenfeler and Georgia Ann Snell (Honorably Retired);

November	6	Our November 12 Presbytery meeting; VITAS Hospice, Middlebury, CT (Rev. Justin Ray); Greenwood Community Church, Presbyterian, Warwick, RI; Revs. Kathleen Davis and Bill Showalter (Honorably Retired); Morgan Campbell (CPM Candidate from Groton: St. Andrew)
	13	St. Andrew Presbyterian Church, Groton, CT (Rev. Mark Porizky); Trinity Christian Academy, Barnstable, MA (Rev. Rick Porter); Opsahl Psychotherapy (Rev. Laura Opsahl); Revs. Randall Ruppert and Terry Davis (Honorably Retired)
	20	First Presbyterian Church Serving the Pioneer Valley, Granby, MA (Rev. John Rodkey); Yale Child Study Center (Rev. Diane Goudreau); Pilgrim UCC, Pittsfield, MA (Rev. Cory Loder); Revs. Norman DeWolfe and Frank Robertson (Honorably Retired); Sang Woo Chi (CPM Candidate from New Haven, CT Korean)
	27	Spouses of our clergy; Cape Cod Hospital, Hyannis, MA (Rev. Rick Vought); Rev. Glenn Ramsey and Wendell Dietrich (Honorably Retired)
December	4	First Presbyterian Church, Hartford, CT (Revs. Martha Highsmith, Jinny Smanik and Tom Speers, Interims); Veterans' Administration Chaplaincy Program (Rev. J. Anthony "Tony" Charles); Revs. Bob Evans and Jovelino Ramos (Honorably Retired); Kathy Cooper (CPM Candidate from Providence)
	11	Hyannis Fellowship (Rev. Alonso Dacunha); Faith Community Church, Oak Bluffs, MA (Rev. Jeffrey Winter); Vitas Innovative Hospice (Rev. Susan Arner); Revs. Ed Prasse and Gail Faithfull (Honorably Retired)
	18	Christ is Life Presbyterian Church, Fall River, MA; First UCC, Bridgeport, CT (Rev. Susan Pfeil; Revs. Barbara Prasse and John Ferguson (Honorably Retired); David Martinez (CPM Candidate from New Canaan)
	25	First Presbyterian Church, New Haven, CT (Rev. Bill Goettler and Rev. Maria LaSala; Rev. Nancy McLaren; Rev. Susan Asher, parish associate); St. Peter's Lutheran Church, Harwich, MA (Rev. Tiffany Nicely Holleck); Revs. Frank Poole and Russell Feroe (Honorably Retired)
January	1	Surviving spouses of our clergy —click blue link for names and addresses
	8	First Presbyterian Church, Fairfield, CT (Rev. Ed Duffy); Revs. Charles Forman and William Pietsch (Honorably Retired)
	15	New Haven Korean Presbyterian Church, Hamden, CT (Rev. Dae Joon Roh); Yale University (Rev. Martha Highsmith); Revs. John Fuhrmeister and Jim Phillips (Honorably Retired); Efrain Sanabria (CPM Candidate from Darien: Noroton)
	22	Synod and General Assembly staff, and GA Moderator; Revs. Bob Perry and Julia Fuller (Honorably Retired); Heidi Park (CPM Candidate from Hamden: New Haven Korean)
	29	Presbytery meeting on Feb. 11, 2012, TBD; Revs. Craig Peel and Bob Greer (Honorably Retired)
February	5	First Presbyterian Church, Greenwich, CT (Rev. Bill Evertsberg, Rev. Joan W. Priest); Revs. David Hare and Mark Orr (Honorably Retired); Olgie Lee Anderson (CPM Inquirer from Springfield: MLK)
	12	United Presbyterian Church, Milford, CT (Rev. Anne Marie Meyerhoffer; Rev. Barbara Hager, parish associate); First Congregational Church, Litchfield, CT (Rev. David Rockness); Revs. Carl Holt and Carol North (Honorably Retired)
	19	Crossroads Presbyterian Church, Waterford, CT (Rev. Anne Fuhrmeister; Rev. Chris Caton, parish associate); Queens College (Rev. Arthur Shippee); Tumaini New Church Development, Springfield, MA (Rev. Joseph Kimatu); Revs. Gordon Johnson and Charles Newberry (Honorably Retired)
	26	Elders in our congregations; Revs. Johanna Johns Jung and Ron Minor (Honorably Retired); Lisa Baker (CPM Inquirer from Springfield: MLK)
March	4	First Presbyterian Church, New Canaan (Rev. Paul Gilmore, Rev. Katherine Stanford, Interim Associate); Revs. Jim Keller and Joe Miller (Honorably Retired)
	11	Rhode Island Council of Churches; Mass. Council of Churches, Christian Conference of CT; Revs. David Mellon and David Kelsey (Honorably Retired); Su Young Kim (CPM Inquirer from Hamden: NH Korean)
	18	Synod Staff, Elder Mary Lynne Flowers; Revs. Patricia Marion and Allen Line (Honorably Retired)
	25	First Presbyterian Church, Newport, RI (Rev. Bill Maxwell); Revs. Jim Lockhart and Donald Lundgren (Honorably Retired); Khelen Kuzmovich (CPM Inquirer from New Haven: First)

April	1	Providence Presbyterian Church, Providence, RI (Rev. Chris Foster, Rev. David Watermulder); Yale University, Dept. of Religious Studies (Rev. Stephen Davis); Revs. Cory Loder and Ross Ludeman (Honorably Retired); Michael Orr (CPM Inquirer from Darien: Noroton)
	8	Barrington Presbyterian Church, Barrington, RI (Rev. Patrick Notley); Yale New Haven Hospital, Pastoral Education Program (Rev. Susan Asher); Rev. Bill Lover and David Graybill (Honorably Retired)
	15	Martin Luther King, Jr. Community Pres. Church, Springfield, MA—Lisa Baker, Clerk; Revs. Adele Crawford and Stuart Fletcher (Members at Large); Russell Powell (CPM Inquirer from Fairfield: First)
	22	Presbytery meeting on May 5, 2012, TBD; Revs. Bob Gibson and Barbara Hager (Members at Large)
	29	First Presbyterian Church, Stamford, CT (Rev. Mary Thies, Rev. David Van Dyke); Revs. Lori Hedlund and John Hwang (Members at Large); Christopher Samsen (CPM Candidate from Darien: Noroton)
May	6	Greenwood Presbyterian Church, Warwick, RI (Rev. Steve Clark); Milford Pastoral Counseling, Milford, CT (Rev. John Sandel); Revs. Matthew Jun and Heather Little-Andrade (Members at Large)
	13	Our 72 honorably retired clergy, 39 in validated ministries; and 16 at-large clergy members
	20	All PSNE elders and clergy serving on Presbytery committees
	27	Faith Presbyterian Church, Cranston, RI (Rev. Paul Terry); United Methodist Elder Care, E. Providence, RI (Rev. John Sweet); Revs. Jill Robertson and Cynthia Robbins (Members at Large); Shannon Craigo-Snell (CPM Inquirer from New Haven: First)
June	3	Revs. Tom Fisher and George Pomeroy (Honorably Retired); Gerson Roca (CPM Candidate from Fall River: Christ is Life)
	10	Connecticut Korean Presbyterian Church, New Haven, CT (Rev. Hyoky Chae, temporary supply); Yale Divinity School (Rev. Susan Olson); Rev. Gerson Annunciacao (Member at Large)
	17	Amherst College (Rev. David Wills); Mike Turilli (CPM Inquirer from West Hartford: Westminster)
	24	Christ Presbyterian Church, Springfield, MA (Rev. Tracy Johnson); Revs. Kathryn Kibbie-Laird and Matthew Braddock (Members at Large)
July	1	Presbyterian colleges and seminaries; Bridgeport Hospital Chaplaincy Program (Rev. Steve Jungkeit)
	8	North Greenwich Congregational Church, Greenwich, CT (Rev. Royal Garren); Presbyterian Church of Korea, Sungnam City, South Korea (Rev. Kuen Soo Kim); Hannah Roh (CPM Inquirer from W. Hartford: Westminster)
	15	Noroton Presbyterian Church, Darien, CT (Revs. Sam Schreiner, Greg Doll, Stuart Smith, Brandi Drake); Woodbury Union Presbyterian Church, Warwick, RI (Rev. Beth Appel)
	22	Presbyterian Peace Fellowship and the accompaniment program of the PC(U.S.A.) (Rev. Christine Caton); all Christian Educators
	29	Calvary Presbyterian Church, Fall River, MA (Rev. Denise Soares); PC(U.S.A.) mission worker (Elder Nancy Collins); Pai Chai University, South Korea (Rev. Shin Ahn)

REFERENCE CODES FOR PRESBYTERY REPORTS

A	Presbytery Council
B	Stated Clerk
C	Treasurer
D	Executive Presbyter
E	Moderator
F	
G	Personnel Committee
H	Committee on Ministry
I	Committee on Social Justice
J	Committee on Preparation for Ministry
K	Committee on Church Development
L	Committee on Congregational Resources
M	Committee on Stewardship and Mission
N	Committee on Ecclesiastical Relations
O	Committee on Nominations
P	Board of Trustees
Q	Advocacy Groups
R	Permanent Judicial Commission
S	Committee on Representation
T	
U	Administrative Commissions
V	Ad Hoc Committees
W	Commissioner to Synod or General Assembly
X	Endowment Committee
Y	Youth Committee

PRESBYTERY COUNCIL AND COMMITTEES

Click above to access committees



REV. MARILYN MCNAUGHTON, COUNCIL CHAIR

* Committee classes noted with asterisks indicate number of terms

PRESBYTERY COUNCIL

Marilyn McNaughton,

Class	Position/Committee	Name/Address			Phone/Fax/E-mail
2012	Moderator	Rev. Martha Highsmith	31 Hilltop Drive W. Hartford CT 06107		Office Phone: 203/432-2675 Office Fax: 203/432-2319 E Mail: martha.highsmith@yale.edu Home Phone: 860/561-4793 Home Fax: Cellular Phone: 203/627-0659
2012	Vice Moderator	Rev. Frank Poole	89 Robin Hollow Rd. W. Greenwich RI 02817-2374		Office Phone: 401/294-1120 Office Fax: E Mail: fhpoole@cox.net Home Phone: 401/397-4794 Home Fax: Cellular Phone:
2012**	Council Chairperson	Rev. Marilyn McNaughton	Babcock Presbyterian Church 25 Maxson St., P.O. Box 188 Ashaway RI 02804-0188		Office Phone: 401/377-4917 Office Fax: E Mail: formclegg@sbcglobal.net Home Phone: 860/464-5265 Home Fax: Cellular Phone:
2012	Executive Presbyter	Rev. Dana Lindsley	Presbytery of Southern New England 123 Elm Street, #200 Old Saybrook CT 06475		Office Phone: 860/388-0874 Office Fax: 860/388-5813 E Mail: danalindsley@psne.org Home Phone: 203/245-4778 Home Fax: 203/384-5995 Cellular Phone: 860/510-2110
2012	Stated Clerk	Elder William Thomas	156 Walker Brook Road S New Milford CT 06776-2660		Office Phone: 860/354-5024 Office Fax: E Mail: wgthomas01@snet.net Home Phone: 860/354-3129 Home Fax: 860/354-3149 Cellular Phone: 203/770-6102
2012*	Treasurer	Elder Tom Taylor	4 Tanglewood Trail Darien CT 06820		Office Phone: Office Fax: E Mail: twtay@aol.com Home Phone: 203/655-6371 Home Fax: Cellular Phone: 203/722-1068
2012****	Co-Chair Church Dev.	Rev. David Watermulder	Providence Presbyterian Church 500 Hope Street Providence RI 02906-1641		Office Phone: 401/861-1136 Office Fax: 401/861-1136 E Mail: david.watermulder@gmail.com Home Phone: Home Fax: Cellular Phone: 401/378-4443

* first year ** second year, etc.

Exception: At large mbrs * 1st 3 year term; ** 2nd 3 year term

Class	Position/Committee	Name/Address			Phone/Fax/E-mail
2012*	Co-Chair Church Dev.	Elder Penny Webster	53 Oswegatchie Road Waterford CT 06385		Office Phone: Office Fax: E Mail: pennyleewebster@sbcglobal.net Home Phone: 860/443-6741 Home Fax: Cellular Phone:
2012**	Ecclesiastical Relations	Rev. Arthur Shippee	72 North Lake Drive Hamden CT 06517		Office Phone: Office Fax: E Mail: ashippee@snet.net Home Phone: 203/248-1911 Home Fax: Cellular Phone: 203/640-8999
2012*	Co-Chair COM	Rev. Thomas Speers	230 Bushy Hill Road Simsbury CT 06070		Office Phone: Office Fax: E Mail: speerstg@gmail.com Home Phone: 860/217-1280 Home Fax: Cellular Phone: 860/817-1847
2012**	Co-Chair COM	Rev. Stephen Clark	Greenwood Community Church 805 Main Avenue Warwick RI 02886		Office Phone: 401/737-1230 Office Fax: 401/739-8067 E Mail: revdrclark@verizon.net Home Phone: 401/781-8833 Home Fax: 401/781-8833 Cellular Phone: 401/258-6182
2012*	Nominations	Rev. Tracy Mehr-Muska	244 North Quaker Lane W. Hartford CT 06119		Office Phone: Office Fax: E Mail: tmehrmuska@yahoo.com Home Phone: 860/586-8880 Home Fax: Cellular Phone: 860/519-9137
2012*	Personnel	Elder Anne Carney	7 Garland Rd. West Hartford CT 06107		Office Phone: Office Fax: E Mail: carneyanne@sbcglobal.net Home Phone: 860/561-4965 Home Fax: Cellular Phone: 860/989-3955
2012****	CPM	Rev. David Van Dyke	First Presbyterian Church 1101 Bedford Street Stamford CT 06905		Office Phone: 203/324-9522 Office Fax: 203/348-5229 E Mail: drvd@fishchurch.org Home Phone: 203/357-1646 Home Fax: Cellular Phone:
2012*	Representation	Elder Lisa Baker	95 State Street, Suite 326 Springfield MA 01103		Office Phone: Office Fax: E Mail: lisabethbaker@gmail.com Home Phone: Home Fax: Cellular Phone: 413/364-1803

* first year ** second year, etc.

Exception: At large mbrs * 1st 3 year term; ** 2nd 3 year term

Class	Position/Committee	Name/Address	Phone/Fax/E-mail
2012****	Social Justice	Rev. James Mahan Turn of River Presbyterian Church 49 Turn of River Rd. Stamford CT 06905	Office Phone: 203/322-5327 Office Fax: same E Mail: j_k_mahan@sbcglobal.net Home Phone: 203/595-8333 Home Fax: Cellular Phone:
2012*	Stewardship & Mission	Rev. Joseph Kimatu Tumaini Presbyterian Fellowship 361 Newhouse Street Springfield MA 01118	Office Phone: 413/301-5291 Office Fax: E Mail: kimatu07@hotmail.com Home Phone: 413/301-5291 Home Fax: 413/301-5291 Cellular Phone: 404/384-1729
2012**	Trustees	Elder William Schimpf 52 Mustang Drive Shelton CT 06484	Office Phone: Office Fax: E Mail: wps59@hotmail.com Home Phone: 203/926-0775 Home Fax: Cellular Phone: 203/395-5329 best
2012*	Youth	Rev. gretchen Sausville Westminster Presbyterian Church 2080 Boulevard W. Hartford CT 06107	Office Phone: 860/521-6240 Office Fax: E Mail: gsausville@westpresby.org Home Phone: 970/405-3176 Home Fax: Cellular Phone:
2012*	At-Large Member	Elder John Berman 664 Farmington Avenue Hartford CT 06105	Office Phone: 860/232-4471 Office Fax: 860/523-9778 E Mail: jberman@westhartfordlaw.com Home Phone: 860/570-0329 Home Fax: Cellular Phone: 860/463-4907
2013**	At-Large Member	Rev. Beth Appel Woodbury Union Church, Presbyterian P. O. Box 9484 Warwick RI 02889	Office Phone: 401/737-8232 Office Fax: 401/738-3702 E Mail: nadomaya@verizon.net Home Phone: 401/831-4246 Home Fax: Cellular Phone: 401/787-7709
2014**	At-Large Member	Elder Harold Hall 3 Bess Road Enfield CT 06082	Office Phone: Office Fax: E Mail: hahah@cox.net Home Phone: 860/745-3176 Home Fax: Cellular Phone:
2014*	At-Large Member	Rev. Steve Thayer Calvary Presbyterian Church 1518 King Street Enfield CT 06082	Office Phone: 860/745-5211 Office Fax: 860/745-6508 E Mail: calvary.presbyterian@snet.net Home Phone: 860/741-7695 Home Fax: Cellular Phone:

* first year ** second year, etc.

Exception: At large mbrs * 1st 3 year term; ** 2nd 3 year term

COMMITTEE ON MINISTRY (COM)

Tom Speers and Steve Clark, Co-Chairs

2012 **Rev. Susan Arner**
 418 Woodward Avenue, #24
 New Haven CT 06512
 Church Affiliation:
 O: 203/455-3300 OFax:
 H: 203/468-6824 HFax:
 Cell:
 Email: susan.arner@alum.ptsem.edu

2012* **Rev. Mark Porizky**
 St. Andrew Presbyterian Church
 310 Fort Hill Road
 Groton CT 06340-4804
 Church Affiliation:
 O: 860/445-8348 OFax: 860/445-6175
 H: 860/245-5090 HFax:
 Cell: 860/705-1262
 Email: MPorizky@comcast.net

2012 **Elder Tom Taylor**
 4 Tanglewood Trail
 Darien CT 06820
 Church Affiliation: Darien: Noroton
 O: OFax:
 H: 203/655-6371 HFax:
 Cell: 203/722-1068
 Email: twtay@aol.com

2013 **Elder Judith Babcock**
 19 Cedar Pond Dr., #6
 Warwick RI 02886
 Church Affiliation: Providence
 O: OFax:
 H: 401/828-6464 HFax:
 Cell: 401/741-2857
 Email: judybab2@cox.net

2012 **Vacancy**
 Church Affiliation:
 O: OFax:
 H: HFax:
 Cell:
 Email:

2013 **Rev. David Graybill**
 357 New Canaan Rd.
 Wilton CT 06897
 Church Affiliation:
 O: OFax:
 H: 203/762-2916 HFax:
 Cell:
 Email: susangraybill@mac.com

2012* **Rev. Christine Delmar**
 85 Rivergate Drive
 Wilton CT 06897
 Church Affiliation:
 O: 203/966-2651 OFax:
 H: 203/762-8722 HFax: 203/762-9599
 Cell: 203/451-9030
 Email: delmar@optonline.net

2013 **Elder Ralph Jones**
 73 Mulberry Hill Street
 Hamden CT 06517
 Church Affiliation: New Haven: First
 O: OFax:
 H: 203/248-7386 HFax:
 Cell: 203/645-6097
 Email: ralph.jones@att.net

2012* **Rev. Laura Opsahl**
 630 Main Street North
 Southbury CT 06488
 Church Affiliation:
 O: OFax:
 H: 203/264-5117 HFax:
 Cell: 203/586-9149 *preferred
 Email: opsahl.laura@gmail.com

2013* **Rev. Stephen Clark**
 Greenwood Community Church
 805 Main Avenue
 Warwick RI 02886
 Church Affiliation:
 O: 401/737-1230 OFax: 401/739-8067
 H: 401/781-8833 HFax: 401/781-8833
 Cell: 401/258-6182
 Email: revdrclark@verizon.net

* denotes serving 2nd term

2013* Rev. Susan Pfeil	2014	Vacancy
275 A Park Street New Canaan CT 06840 Church Affiliation: O: 203/368-3103 H: 203/966-7271 Cell: 203/644-8618 Email: Revspfeil@aol.com	Church Affiliation: O: H: Cell: Email:	OFax: HFax:

2013* Elder Charlene Roberson	2014* Rev. Johanna Johns Jung
16 Hassake Road Old Greenwich Ct 06870 Church Affiliation: Greenwich: First O: OFax: H: 203/637-3403 HFax: Cell: Email: charhrob@att.net	17 Harmony Trail New Milford CT 06776 Church Affiliation: O: OFax: H: 860/799-0269 HFax: Cell: 631/219-7020 Email: jjjung17@charter.net

2014	Vacancy	2014* Rev. Thomas Speers
Church Affiliation: O: H: Cell: Email:	OFax: HFax:	230 Bushy Hill Road Simsbury CT 06070 Church Affiliation: O: OFax: H: 860/217-1280 HFax: Cell: 860/817-1847 Email: speerstg@gmail.com

2014	Vacancy
Church Affiliation: O: H: Cell: Email:	OFax: HFax:

2014	Vacancy
Church Affiliation: O: H: Cell: Email:	OFax: HFax:

* denotes serving 2nd term

COMMITTEE ON REPRESENTATION

Lisa Baker, Chair

Class	Name/Address	Vacancy	Church Affiliation	Phone/Fax/E-mail
2012		Vacancy		Office Phone: Office Fax: E Mail: Home Phone: Home Fax: Cellular Phone:
2012		Vacancy		Office Phone: Office Fax: E Mail: Home Phone: Home Fax: Cellular Phone:
2013	Elder Lisa Baker 95 State Street, Suite 326 Springfield MA 01103		Springfield: MLK	Office Phone: Office Fax: E Mail: lisabethbaker@gmail.com Home Phone: Home Fax: Cellular Phone: 413/364-1803
2013	Rev. Christine Foster Providence Presbyterian Church 500 Hope Street Providence RI 02906			Office Phone: 401/861-1136 Office Fax: 401/861-1136 E Mail: cjfoster@alumni.princeton.edu Home Phone: 401/454-0176 Home Fax: Cellular Phone: 401/323-7292
2013		Vacancy		Office Phone: Office Fax: E Mail: Home Phone: Home Fax: Cellular Phone:
2014		Vacancy		Office Phone: Office Fax: E Mail: Home Phone: Home Fax: Cellular Phone:
2014		Vacancy		Office Phone: Office Fax: E Mail: Home Phone: Home Fax: Cellular Phone:

COMMITTEE ON PREPARATION FOR MINISTRY (CPM)

David Van Dyke, Chair

2012 **Rev. Joseph Miller**
80 Touisset Road
Warren RI 02885
Church Affiliation:
O: OFax:
H: 401/245-5666 HFax:
Cell:
Email: hanjoe.miller@gmail.com

2013* **Elder John Harter**
2 Silvermine Ridge
Silvermine CT 06850
Church Affiliation: Stamford: First
O: OFax:
H: 203/847-2227 HFax: 203/847-2228
Cell: 203/536-9666
Email: jharter@optonline.net

2012 **Rev. Virginia Smanik**
First Presbyterian Church
136 Capitol Avenue
Hartford CT 06106-1619
Church Affiliation:
O: OFax:
H: 860/779-0070 HFax:
Cell: 860/490-9730
Email: virginia.smanik@gmail.com

2014 **Rev. Susan Olson**
835 Elm Street, Apt. A-1
New Haven CT 06511
Church Affiliation:
O: 203/432-9485 OFax:
H: 203/623-4115 HFax:
Cell:
Email: susan.olson@yale.edu

2012* **Rev. Stephen Davis**
160 Alden Ave.
New Haven CT 06515
Church Affiliation: New Haven: First
O: 203/432-6532 OFax: 203/432-7844
H: HFax:
Cell: 203/535-2848
Email: stephen.davis@yale.edu

2014 **Rev. John Sweet**
29 Buckley Avenue
West Warwick RI 02893
Church Affiliation:
O: 401/462-0122 OFax:
H: 401/474-0892 HFax:
Cell:
Email: jdsweet805@cox.net

2013 **Rev. Maria LaSala**
First Presbyterian Church
704 Whitney Avenue
New Haven CT 06511
Church Affiliation: First Presbyterian
O: 203/562-5664 OFax: 203/562-1202
H: 203/776-2254 HFax:
Cell:
Email: mariasmal@aol.com

2014* **Rev. David Van Dyke**
First Presbyterian Church
1101 Bedford Street
Stamford CT 06905
Church Affiliation: Stamford: First
O: 203/324-9522 OFax: 203/348-5229
H: 203/357-1646 HFax:
Cell:
Email: drvd@fishchurch.org

2013 **Vacancy**
Church Affiliation:
O: OFax:
H: HFax:
Cell:
Email:

* denotes serving 2nd term

ECCLESIASTICAL RELATIONS

Arthur Shippee, Chair

2012	Vacancy	2013*	Rev. Georgia Ann Snell
			7 Wamasquid Place Box 297 Nantucket MA 02554-0297
Church Affiliation:		Church Affiliation:	
O:	OFax:	O:	OFax:
H:	HFax:	H: 508/325-4547	HFax: 508/228-5582
Cell:		Cell: 508/245-5821	
Email:		Email: snellhotel@gmail.com	
2012*	Rev. Barbara Hager	2014	Elder Cathy Thomas
			226 Silver Spring Rd. S. Salem NY 10590
783 Garfield Avenue Bridgeport CT 06606		Church Affiliation: Wilton	
Church Affiliation:		O:	OFax:
O: 203/336-1874	OFax:	H: 914/533-2580	HFax:
H: 203/336-1874	HFax:	Cell:	
Cell: 203/336-1874		Email: bg1canton@aol.com	
Email: msrevjd@optonline.net			
2012*	Elder Gloria Walsh	2014*	pending Elder Barry Baxter
			35 Peters Lane W. Warwick RI 02893
16 Alaimo Drive Enfield CT 06082		Church Affiliation: Warwick: Greenwood	
Church Affiliation: Enfield: Calvary		O:	OFax:
O:	OFax:	H: 401/826-1311	HFax:
H: 860/749-7847	HFax:	Cell:	
Cell:		Email: malcolmb@aol.com	
Email:			
2013	Elder Stephanie Brackett	2014*	pending Rev. Arthur Shippee
			72 North Lake Drive Hamden CT 06517
44 Cottage Place Stratford CT 06614		Church Affiliation: New Haven:First	
Church Affiliation: Milford		O:	OFax:
O:	OFax:	H: 203/248-1911	HFax:
H: 203/873-0198	HFax:	Cell: 203/640-8999	
Cell: 203/615-2129		Email: ashippee@snet.net	
Email: Msbrkt@aol.com			
2013	Rev. Julia Fuller		
P.O. Box 127 Ashaway RI 02804			
Church Affiliation:			
O:	OFax:		
H: 401/364-1619	HFax:		
Cell: 401/932-7969			
Email: revjaf@cox.net			

* denotes serving 2nd term

Baxter/Shippee pending re-election 9/10/11

NOMINATIONS

Tracy Mehr-Muska, Chair

2012 **Elder Lois Maxwell**

41 Wilfred Street
West Hartford CT 06110-1170
Church Affiliation: Hartford
O: 860/276-2956 OFax: 860/276-2903
H: 860/233-5485 HFax: 860/232-0493
Cell:
Email: Matlock745@aol.com

2013 **Rev. Paul Terry**

Faith Presbyterian Church
499 Hope Road
Cranston RI 02921-2740
Church Affiliation:
O: 401/822-2070 OFax: 401/823-4370
H: 401/943-2178 HFax:
Cell:
Email: fpcpstr@aol.com

2012 **Rev. Anne Marie Meyerhoffer**

United Presbyterian Church
109 Seaside Avenue
Milford CT 06460
Church Affiliation:
O: 203/874-7088 x 11 OFax: 203/874-7088
H: 860/224-8420 HFax:
Cell: 860/306-3556 (emer. only)
Email: RevAMM@yahoo.com

2014 **Rev. Justin Ray**

141 Alden Ave
New Haven CT 06515
Church Affiliation:
O: 203/437-3111 OFax: 203/437-3150
H:
Cell: 203/687-7048
Email: justinray@gmail.com

2012** **Elder Patricia**

140 Riverside Drive
Hamden CT 06518-2611
Church Affiliation: New Haven: First
O: 203/789-3330 OFax: 203/789-5176
H: 203/230-8303 HFax:
Cell: 203/645-9747
Email: pwales@srhs.org

Wales2014 **Elder Arthur Riihimaki**

65 Brookmoor Rd.
West Hartford CT 06107
Church Affiliation: W.Hart:Westminster
O: 860/666-3331 OFax: 860/666-3332
H: 860/561-1174 HFax:
Cell: 860/803-0658
Email: artsdomain@mac.com

2013 **Rev. Jane Field**

11 Ridgewood Road
Wilton CT 06897
Church Affiliation:
O: 203/762-5514 OFax: 203/762-0903
H: 203/834-0158 HFax: 203/834-7959
Cell:
Email: janefield@wiltonpresbyterian.org

2014* **Elder Tom Taylor**

4 Tanglewood Trail
Darien CT 06820
Church Affiliation: Darien: Noroton
O:
H: 203/655-6371 HFax:
Cell: 203/722-1068
Email: twtay@aol.com

2013 **Rev. Tracy Mehr-Muska**

244 North Quaker Lane
W. Hartford CT 06119
Church Affiliation:
O:
H: 860/586-8880 HFax:
Cell: 860/519-9137
Email: tmehrmuska@yahoo.com

* denotes serving 2nd term

PERMANENT JUDICIAL COMMISSION

Barbara Hager, Clerk

2013 **Rev. Barbara Hager**

783 Garfield Avenue
Bridgeport CT 06606
Church Affiliation:
O: 203/336-1874 OFax:
H: 203/336-1874 HFax:
Cell: 203/336-1874
Email: msrevjd@optonline.net

2017 **Elder Samuel Hamilton**

309 Kennedy Road
Manchester CT 06040
Church Affiliation: Hartford: First
O: 860/527-1301 OFax: 860/727-9224
H: 860/646-5282 HFax: 860/643-7614
Cell: 860/281-4294
Email: samh@hedco-ct.com

2013 **Elder Gerson Roca**

938 Waverly Street
Framingham MA 01702
Church Affiliation: Fall River: CIL
O: OFax:
H: 508/879-9973 HFax:
Cell: 508/361-5071 preferred
Email: gersonroca@gmail.com

2017 **Vacancy**

Church Affiliation:
O: OFax:
H: HFax:
Cell:
Email:

2015 **Vacancy**

Church Affiliation:
O: OFax:
H: HFax:
Cell:
Email:

2015 **Elder Jim Whitney**

125 Linden Street
New Haven CT 06511
Church Affiliation: New Haven: First
O: 203/865-7380 OFax: 203/865-1021
H: 203/562-0809 HFax:
Cell:
Email: whitneyatt@aol.com

2017 **Rev. Eileen Epperson**

78 Main St., P.O. Box 573
Salisbury CT 06068
Church Affiliation:
O: OFax:
H: 860/435-0288 HFax: 860/435-0288 call 1st
Cell: 860/605-6576
Email: eppervesce@aol.com

* 6-year terms; 4 yrs. to elapse in between terms

PERSONNEL

Anne Carney, Chair

2012 **Elder Anne Carney**

7 Garland Rd.
West Hartford CT 06107
Church Affiliation: W. Hartford
O: OFax:
H: 860/561-4965 HFax:
Cell: 860/989-3955
Email: carneyanne@sbcglobal.net

2012 **Rev. Gail Faithfull**

195 Summer Hill Road
Madison CT 06443
Church Affiliation:
O: OFax:
H: 203/421-2290 HFax:
Cell:
Email: macgail@sbcglobal.net

2013 **Vacancy**

Church Affiliation:
O: OFax:
H: HFax:
Cell:
Email:

2014 **Rev. Paul Gilmore**

First Presbyterian Church
178 Oenoke Ridge
New Canaan CT 06840
Church Affiliation:
O: 203/966-0002 OFax: 203/966-0137
H: 203/594-7748 HFax:
Cell: 651/491-6425
Email: paul@fpcnc.org

2014* **Rev. John Sandel**

5 Rogers Avenue
Milford CT 06460
Church Affiliation:
O: 203/877-7713 OFax: 203/877-7713
H: 203/878-3357 HFax: 203/878-0114
Cell: 203/260-0222
Email: johns357@aol.com

* denotes serving 2nd term

SOCIAL JUSTICE

Jim Mahan, Chair

2012 **Rev. Adele Crawford**

93 Ridgewood Ave.
North Haven CT 06473
Church Affiliation:
O: OFax:
H: HFax:
Cell: 203/278-9636
Email: adelec23@gmail.com

2013* **Rev. James Mahan**

Turn of River Presbyterian Church
49 Turn of River Rd.
Stamford CT 06905
Church Affiliation:
O: 203/322-5327 OFax: same
H: 203/595-8333 HFax:
Cell:
Email: j_k_mahan@sbcglobal.net

2012 **Elder Dick Hasbany**

214 Alps Rd. #29
Branford CT 06405
Church Affiliation: New Haven: 1st
O: OFax:
H: 203/208-0578 HFax:
Cell:
Email: dick_hasbany@yahoo.com

2014 **Rev. Alonso Dacunha**

Hyannis Presbyterian Fellowship
P.O. Box 1631, 320 Main Street
Hyannis MA 02601
Church Affiliation:
O: 508/437-1454 OFax: 508/437-1454
H: 508/437-1454 HFax:
Cell: 508/364-2820
Email: cunhaalonso@hotmail.com

2012* **Rev. Jovelino Ramos**

53 Netherlands Avenue
Cranston RI 02905
Church Affiliation:
O: OFax:
H: 401/781-2691 HFax:
Cell: 401/714-3464
Email: joveramos@yahoo.com

2014 **Vacancy**

Church Affiliation:
O:
H: HFax:
Cell:
Email:

2013 **Rev. Christine Caton**

41 Goshen Road
Waterford CT 06385
Church Affiliation:
O: OFax:
H: 860/443-1714 HFax:
Cell: 860/501-1854
Email: christine.caton@gmail.com

2014 **Vacancy**

Church Affiliation:
O: OFax:
H: HFax:
Cell:
Email:

2013 **Vacancy**

Church Affiliation:
O: OFax:
H: HFax:
Cell:
Email:

* denotes serving 2nd term

STEWARDSHIP and MISSION

Joseph Kimatu, Chair

2012 **Elder Mark Doescher**

16 Fields View Rd.
Bradford RI 02808
Church Affiliation: Westerly
O: OFax:
H: 401/377-0034 HFax:
Cell: 401-316-9574
Email: doescherma@aol.com

2013* **Elder Doug Ray**

40 Edison Street
Warwick RI 02889-1538
Church Affiliation: Warwick:Woodbury
O: OFax:
H: 401/738-9471 HFax:
Cell: 401/644-1672
Email: adougray@verizon.net

2012 **Vacancy**

Church Affiliation:
O: OFax:
H: HFax:
Cell:
Email:

2014 **Elder Judy Cunningham**

40 Old Lantern Rd.
Danbury CT 06810
Church Affiliation: Brookfield: Valley
O: OFax:
H: 203/744-6793 HFax:
Cell:
Email: danjudithc@aol.com

2012* **Rev. Tracy Johnson**

Christ Presbyterian Church
1597 Allen St.
Springfield MA 01118
Church Affiliation:
O: 413/782-9872 OFax:
H: 413/783-4097 HFax:
Cell: 413/636-5664 preferred
Email: tracy@christ-pres.org

2014 **Elder Anne Lang**

72 Courtland Drive
Groton CT 06340
Church Affiliation: Waterford
O: OFax:
H: 860/443-9688 HFax:
Cell:
Email: al8125@gmail.com

2013 **Rev. Joseph Kimatu**

Tumaini Presbyterian Fellowship
361 Newhouse Street
Springfield MA 01118
Church Affiliation:
O: 413/301-5291 OFax:
H: 413/301-5291 HFax: 413/301-5291
Cell: 404/384-1729
Email: kimatu07@hotmail.com

2014 **Vacancy**

Church Affiliation:
O: OFax:
H: HFax:
Cell:
Email:

2013 **Vacancy**

Church Affiliation:
O: OFax:
H: HFax:
Cell:
Email:

* denotes serving 2nd term

TRUSTEES

Bill Schimpf, Chair

2012 **Elder Daniel Cunningham**

40 Old Lantern Rd.
 Danbury CT 06810
 Church Affiliation: Brookfield Valley
 O: OFax:
 H: 203/744-6793 HFax: 203/744-6793
 Cell: 203/417-8357
 Email: danjudithc@aol.com

2013* **Elder Ernest Jung**

17 Harmony Trail
 New Milford CT 06776
 Church Affiliation: Brookfield
 O: OFax:
 H: 860/799-0269 HFax:
 Cell:
 Email: egjung@aol.com

2012* **Rev. David Rockness**

Litchfield Congregational Church
 21 Torrington Rd.
 Litchfield CT 06759
 Church Affiliation:
 O: 860/567-8705 OFax: 860/567-2490
 H: 860/567-8570 HFax:
 Cell: 860/201-7969
 Email: dfr-congregation@sbcglobal.net

2014 **Elder Robert Bourguignon**

25 William Street
 Norwalk CT 06851
 Church Affiliation: Wilton
 O: OFax:
 H: 203/354-3940 HFax:
 Cell: 917/324-4100
 Email: bourguignon101@hotmail.com

2012* **Rev. Paul Terry**

Faith Presbyterian Church
 499 Hope Road
 Cranston RI 02921-2740
 Church Affiliation:
 O: 401/822-2070 OFax: 401/823-4370
 H: 401/943-2178 HFax:
 Cell:
 Email: fpcpstr@aol.com

2014* **Elder Susan Frew**

204 Bishop Street
 New Haven CT 06511
 Church Affiliation: New Haven: First
 O: OFax:
 H: 203/865-5883 HFax:
 Cell: 203/314-4144 preferred
 Email: sfrew@snet.net

2013 **Elder Ralph Reynolds**

104 Delafield Island Rd.
 Darien CT 06820
 Church Affiliation: Darien
 O: 203/810-4141 OFax:
 H: 203/655-5489 HFax:
 Cell: 646/709-5884
 Email: ralph.reynolds@pointclearp.com

2014* **Rev. Anne Fuhrmeister**

Crossroads Presbyterian Church
 70 Cross Road
 Waterford CT 06385
 Church Affiliation:
 O: 860/442-3693 OFax:
 H: 860/447-3195 HFax:
 Cell:
 Email: pastor.crossroads@att.net

2013 **Elder William Schimpf**

52 Mustang Drive
 Shelton CT 06484
 Church Affiliation: Fairfield
 O: OFax:
 H: 203/926-0775 HFax:
 Cell: 203/395-5329 best
 Email: wps59@hotmail.com

* denotes serving 2nd term--Susan Frew's term ends 2013

"YOUTH

gretchen Sausville, Chair

2012* **Rev. Kathryn Kibbie Laird**

135 Lone Tree Farm Rd.
 New Canaan CT 06840
 Church Affiliation:
 O: OFax:
 H: 203/283-1992 HFax:
 Cell: 203/219-3535*best
 Email: kibbielaird@yahoo.com

2013 **Rev. Rick Vought**

P.O. Box 2666
 Orleans MA 02653
 Church Affiliation:
 O: 774-722-0441 OFax:
 H: 508/255-6384 HFax:
 Cell: 774/722-0441
 Email: rickvought@yahoo.com

2012* **Elder Patricia Rychlec**

73 Granite Street
 Westerly RI 02891
 Church Affiliation: Westerly: Dunn's Corners
 O: 860-433-4211 OFax:
 H: 401/348-9778 HFax:
 Cell: 401/954-2129
 Email: pcrych@aol.com

2014 **Vacancy**

Church Affiliation:
 O: OFax:
 H: HFax:
 Cell:
 Email:

2013 **Rev. Nancy McLaren**

724 Whitney Ave.
 New Haven CT 06511
 Church Affiliation:
 O: OFax:
 H: 203/584-4149 HFax:
 Cell:
 Email: nancybmclaren@gmail.com

2014 **Vacancy**

Church Affiliation:
 O: OFax:
 H: HFax:
 Cell:
 Email:

2013 **Rev. gretchen Sausville**

Westminster Presbyterian Church
 2080 Boulevard
 W. Hartford CT 06107
 Church Affiliation:
 O: 860/521-6240 OFax:
 H: 970/405-3176 HFax:
 Cell:
 Email: gsausville@westpresby.org

* denotes serving 2nd term

Particular Church

- 101 Pastor or Co-Pastor
- 103 Associate Pastor
- 105 Interim Pastor or Interim Associate
- 106 Stated Supply
- 107 Commissioned Lay Pastor
- 108 Temporary Supply
- 109 Pastor Emeritus/Emerita

Larger Parish or Yoked Field

- 111 Pastor or Co-Pastor
- 113 Associate Pastor
- 115 Interim Pastor or Interim Associate
- 116 Stated Supply
- 117 Commissioned Lay Pastor
- 118 Temporary Supply

Federated, Parish, or Community

- 121 Pastor or Co-Pastor
- 123 Associate Pastor
- 125 Interim Pastor or Interim Associate
- 126 Stated Supply

Union Church

- 131 Pastor or Co-Pastor
- 133 Associate Pastor
- 135 Interim Pastor or Interim Associate
- 136 Stated Supply

Member of Another Denomination

- 151 Pastor or Co-Pastor
- 153 Associate Pastor
- 155 Interim Pastor or Interim Associate
- 156 Stated Supply
- 158 Temporary Supply

Tentmaker

- 171 Pastor or Co-Pastor
- 173 Associate Pastor
- 175 Interim Pastor or Interim Associate
- 176 Stated Supply
- 178 Temporary Supply

Stated Clerk of Presbytery or Synod

- 181 Pastor or Co-Pastor
- 183 Associate Pastor
- 185 Interim Pastor or Interim Associate
- 186 Stated Supply

191 Designated Pastor

299 Honorably Retired Member of Presbytery

Middle Governing Bodies

- 301 Organizing Pastor or Evangelist
- 302 Executive
- 303 Stated Clerk
- 304 Executive & Stated Clerk
- 305 Staff
- 306 Missionary
- 309 Middle Governing Bodies Emeritus/Emerita

General Assembly Entities

- 402 Chief Executive Officer
- 403 Headquarters Staff
- 404 Field Staff
- 405 Missionary or Fraternal Worker

Serving Another Denomination, Ecumenical Agency, or Non-Denominational Agency

- 501 Pastor or Co-Pastor
- 503 Associate Pastor
- 505 Interim Pastor
- 506 Stated Supply
- 562 Chief Administrative Officer
- 565 Staff

Schools Secondary/Elementary

- 631 Pastor/Chaplain
- 632 President or Chief Administrator
- 633 Administrative Staff
- 634 Faculty Majority in Religious Studies
- 635 Faculty Majority in Non-Religious Studies
- 636 Librarian or Other Professional

College or University

- 641 Pastor/Chaplain
- 642 President or Chief Administrator
- 643 Administrative Staff
- 644 Faculty Majority in Religious Studies
- 645 Faculty Majority in Non-Religious Studies
- 646 Librarian or Other Professional
- 648 Student

Seminary

- 651 Pastor/Chaplain
- 652 President or Chief Administrator
- 653 Administrative Staff
- 654 Faculty Majority in Religious Studies
- 655 Faculty Majority in Non-Religious Studies
- 656 Librarian or Other Professional

Serving Other Institutions

- 701 Pastor/Chaplain
- 702 Chief Administrator
- 703 Staff

Military Services

- 741 Air Force Chaplain
- 751 Army Chaplain
- 761 Navy Chaplain
- 771 Veterans Administration Chaplain

Pastoral Counselor

- 781 Parish Based
- 782 Pastoral Counseling Center
- 783 Vocational
- 784 Spiritual Director

Other Codes

- 791 Other Validated Ministry
- 795 Inactive
- 796 *Inactive/Exclusion from Office*
- 797 Member at Large

Clergy on the Rolls

Presbytery of Southern New England

EOD	Name/Address	Spouse	Available Via:	
644	Ahn, Shin Donam 2 Dong, Hanjin Apt. #207-501 Seongbuk Gu, Seoul 136-753 South Kor	Eun-ok Park	Office: Ofax: Home: Hfax: E-mail	shinahn@snu.ac.kr
797	Annunciacao, Gerson 1928 North Main St., # 2 Fall River, MA 02720	Sandra	Office: Ofax: Home: Hfax: E-mail	rev.gerson@verizon.net
101	Appel, Beth Woodbury Union Church, Presbyterian P. O. Box 9484 Warwick, RI 02889		Office: Ofax: Home: Hfax: E-mail	401/737-8232 401/738-3702 401/831-4246 nadamaya@verizon.net
701	Arner, Susan 418 Woodward Avenue, #24 New Haven, CT 06512		Office: Ofax: Home: Hfax: E-mail	203/455-3300 203/468-6824 susan.arners@alum.ptsem.edu
701	Asher, Susan 144 Hepburn Road Hamden, CT 06517		Office: Ofax: Home: Hfax: E-mail	203/688-2151 203/688-3478 203/287-8937 Susan.Asher@ynhh.org

EOD	Name/Address	Spouse	Available Via:
299	Baez, Samuel 19 Riverside Drive Waterford, CT 06385	Marianne	Office: Ofax: Home: 860/443-2422 Hfax: 860/443-2422 E-mail sjjostrom@aol.com
299	Beams, Ann 36 Stonehurst Common Hanover, NH 03755	Mark	Office: Ofax: Home: 603/643-0681 Hfax: E-mail ann.beams@gmail.com
299	Blackadar, Murray 100 John Street Providence, RI 02906-3020	Judith	Office: Ofax: Home: 401/621-7196 Hfax: E-mail Murray.Blackadar@Cox.net
299	Brooks, Edwin 103 South Road Harrisville, NH 03450-5546	Virginia	Office: Ofax: Home: 603/827-3166 Hfax: E-mail ebrooks@nmhschool.org
299	Brooks, Virginia 103 South Road Harrisville, NH 03450-5546	Edwin	Office: Ofax: Home: 603/827-3166 Hfax: E-mail vbrooks@nmhschool.org
644	Carvalhaes, Claudio 1904 Roanoke Ave., Apt. 3 Louisville, KY 40205		Office: Ofax: Home: 502/649-3399 Hfax: E-mail ccarvalhaes@lpts.edu

EOD	Name/Address	Spouse	Available Via:
299	Castner, Edward 122 Ashlar Village Wallingford, CT 06492	Wanda	Office: Ofax: Home: 203/679-0164 Hfax: E-mail edwardcastner@ashlarvlg.org
791	Caton, Christine 41 Goshen Road Waterford, CT 06385		Office: Ofax: Home: 860/443-1714 Hfax: E-mail christine.caton@gmail.com
299	Chang, Wilson 13097 Triple Crown Loop Gainesville, VA 20155	Kyung	Office: Ofax: Home: Hfax: E-mail wisechang2@gmail.com
701	Charles, J. Anthony 111 Spring Lane W. Hartford, CT 06107-3344	Gwyn	Office: Ofax: Home: 860/305-3119 Hfax: 860-521-1666 E-mail gmjacharles@comcast.net
299	Chase, David (R.K.) 39 Woodhaven Dr. Simsbury, CT 06070-2642	Barbara	Office: Ofax: Home: 860/658-0753 Hfax: 860/658-0753 E-mail dchase88@comcast.net
101	Clark, Stephen Greenwood Community Church 805 Main Avenue Warwick, RI 02886		Office: 401/737-1230 Ofax: 401/739-8067 Home: 401/781-8833 Hfax: 401/781-8833 E-mail revdrclark@verizon.net

EOD	Name/Address	Spouse	Available Via:
299	Conboy, Thomas 21 Plantation Drive Cumberland, RI 02864	Lois	Office: Ofax: Home: 401/658-3838 Hfax: E-mail revconboy@verizon.net
299	Couch, Ed 14 Kent Circle Topsham, ME 04086	Marguerite	Office: Ofax: Home: 207/729-1884 Hfax: E-mail
797	Crawford, Adele 93 Ridgewood Ave. North Haven, CT 06473	Kurt Shaffert	Office: Ofax: Home: Hfax: E-mail adelec23@gmail.com
301	Dacunha, Alonso Hyannis Presbyterian Fellowship P.O. Box 1631, 320 Main Street Hyannis, MA 02601	Katie	Office: 508/437-1454 Ofax: 508/437-1454 Home: 508/437-1454 Hfax: E-mail cunhaalonso@hotmail.com
299	Dannenfelser, Richard 45 Byron Ave. Rumford, RI 02916	Bronwyn Anne	Office: Ofax: Home: 401/434-1698 Hfax: 401/434-1698 E-mail thereverenddoctor@yahoo.com
701	Davis, Jennifer 160 Alden Avenue New Haven, CT 06515	Stephen	Office: Ofax: Home: Hfax: E-mail davisfive@gmail.com

EOD	Name/Address	Spouse	Available Via:
299	Davis, Kathleen 64 Shepard Road West Hartford, CT 06110	Terrence	Office: Ofax: Home: 860/521-4980 Hfax: E-mail kdavis@harthosp.org
405	Davis, Stephen 160 Alden Ave. New Haven, CT 06515	Jennifer	Office: 203/432-6532 Ofax: 203/432-7844 Home: Hfax: E-mail stephen.davis@yale.edu
299	Davis, Terrence 64 Shepard Road W. Hartford, CT 06110-2021	Kathleen	Office: Ofax: Home: 860/521-4980 Hfax: E-mail revtdavis@yahoo.com
103	Delmar, Christine 85 Rivergate Drive Wilton, CT 06897	Daniel	Office: 203/966-2651 Ofax: Home: 203/762-8722 Hfax: 203/762-9599 E-mail delmar@optonline.net
299	DeWolfe, Norman 16710 Bobcat Drive S.W. Ft. Myers, FL 33908	Carolyn	Office: Ofax: Home: 239/481-4670 Hfax: E-mail nsdewolfe@embarqmail.com
299	Dietrich, Wendell 355 Blackstone Blvd., Apt. 417 Providence, RI 02906	Betsy	Office: Ofax: Home: 401/331-0897 Hfax: E-mail Bbdwsd@aol.com

EOD	Name/Address	Spouse	Available Via:	
103	Doll, Greg Noroton Presbyterian Church 2011 Post Road Darien, CT 06820	Kimberly	Office: Ofax: Home: Hfax: E-mail	203/655-1451 203/655-6638 203/655-7515 greg.doll@norotonchurch.org
103	Drake, Brandi Wolfe Noroton Presbyterian Church 2011 Post Road Darien, CT 06820-3401	Evan	Office: Ofax: Home: Hfax: E-mail	203/655-1451 203/655-6638 203/202-7535 brandi.drake@norotonchurch.org
151	Duffy, Edward First Presbyterian Church 2475 Easton Turnpike Fairfield, CT 06825	Lynne	Office: Ofax: Home: Hfax: E-mail	203/374-6176 203/374-1643 203/416-9122 edwduffy75@gmail.com
155	Duncan, Stan United Parish of Fall River 745 Wilson Road Fall River, MA 02720		Office: Ofax: Home: Hfax: E-mail	508/679-6835 508/677-1669 781/504-6875 802/609-0504 standuncan@post.harvard.edu
797	Epperson, Eileen 78 Main St., P.O. Box 573 Salisbury, CT 06068		Office: Ofax: Home: Hfax: E-mail	 860/435-0288 860/435-0288 call 1st eppervesce@aol.com
299	Evans, Robert 6 Linda Lane Simsbury, CT 06070	Alice	Office: Ofax: Home: Hfax: E-mail	860/651-4304 860/651-4305 860/658-6645 BobEvans@PlowsharesInstitute.or

EOD	Name/Address	Spouse	Available Via:
101	Evertsberg, William First Presbyterian Church 1 West Putnam Avenue Greenwich, CT 06830	Kathy	Office: 203/869-8686 ext 116 Ofax: 203/869-1745 Home: 203/698-2812 Hfax: E-mail william.evertsberg@fpcg.org
299	Faithfull, Gail 195 Summer Hill Road Madison, CT 06443	Leo McDonnell	Office: Ofax: Home: 203/421-2290 Hfax: E-mail macgail@sbcglobal.net
299	Ferguson, John 15 Foxcroft Road Niantic, CT 06357-1415	Evelyn	Office: Ofax: Home: 860/739-7716 Hfax: E-mail churinga@att.net
299	Feroe, Russell 1328-N Asylum Ave. Hartford, CT 06105	Louise	Office: Ofax: Home: 860/904-6467 Hfax: E-mail rferoe@msn.com
797	Field, Jane 11 Ridgewood Road Wilton, CT 06897		Office: 203/762-5514 Ofax: 203/762-0903 Home: 203/834-0158 Hfax: 203/834-7959 E-mail janefield@wiltonpresbyterian.org
299	Fisher, Thomas 8 Tanglewood Road Amherst, MA 01002-3466	Clara Joe	Office: Ofax: Home: 413/256-5488 Hfax: 413/256-5488 phone first E-mail cjntef@earthlink.net

EOD	Name/Address	Spouse	Available Via:
797	Fletcher, Stuart Savannah Korean Presbyterian Church 6501 Waters Avenue Savannah, GA 31406	Charlotte	Office: 912/356-3555 Ofax: Home: 912/598-1851 Hfax: E-mail revsfletcher@yahoo.com
299	Forman, Charles 200 Leeder Hill Drive, Apt. 237 Hamden, CT 06517	Janice	Office: Ofax: Home: 203/230-1214 Hfax: E-mail
101	Foster, Christine Providence Presbyterian Church 500 Hope Street Providence, RI 02906	Andrew	Office: 401/861-1136 Ofax: 401/861-1136 Home: 401/454-0176 Hfax: E-mail cjfoster@alumni.princeton.edu
101	Fuhrmeister, Anne Crossroads Presbyterian Church 70 Cross Road Waterford, CT 06385	Randy Francisco	Office: 860/442-3693 Ofax: Home: 860/447-3195 Hfax: E-mail pastor.crossroads@att.net
299	Fuhrmeister, John 901 Noank Ledyard Road Mystic, CT 06355	Hazel	Office: Ofax: Home: 860/572-7295 Hfax: E-mail johnhazelf@sbcglobal.net
299	Fuller, Julia P.O. Box 127 Ashaway, RI 02804		Office: Ofax: Home: 401/364-1619 Hfax: E-mail revjaf@cox.net

EOD	Name/Address	Spouse	Available Via:
501	Garren, Royal North Greenwich Cong. Church 606 Riversville Road Greenwich, CT 06831		Office: 203/869-7763 Ofax: 203/869-6586 Home: Hfax: E-mail rbgarrenjr@aol.com
101	Gestal, William Presbyterian Church of Old Greenwich 38 West End Avenue Old Greenwich, CT 06870	Susan	Office: 203/637-3669 Ofax: 203/698-1370 Home: 203/532-5471 Hfax: same E-mail office@pcogonline.org
797	Gibson, Robert P.O.Box 969 Orleans, MA 02653	Gail	Office: 508/255-4685 x 330 Ofax: Home: 508/255-6318 Hfax: E-mail robertbrucegibson@gmail.com
101	Gilmore, Paul First Presbyterian Church 178 Oenoke Ridge New Canaan, CT 06840		Office: 203/966-0002 Ofax: 203/966-0137 Home: 203/594-7748 Hfax: E-mail paul@fpcnc.org
101	Glenn, James Dunn's Corners Community Church, Pre 221 Post Road Westerly, RI 02891		Office: 401/322-0655 Ofax: 401/322-1740 Home: 401/322-9350 Hfax: E-mail Clerk@DCCCP.necoxmail.com
101	Goettler, William First Presbyterian Church 704 Whitney Avenue New Haven, CT 06511	Maria LaSala	Office: 203/562-5664 Ofax: 203/562-1202 Home: 203/776-2254 Hfax: E-mail wgoettler@aol.com

EOD	Name/Address	Spouse	Available Via:
641	Goudreau, Diane 4 Lamkin St. Hamden, CT 06517	John Cline	Office: 203/785-3489 Ofax: 203/737-4197 Home: 203/562-1113 Hfax: 203/404-9936 E-mail: diane.goudreau@yale.edu
299	Graybill, David 357 New Canaan Rd. Wilton, CT 06897	Susan	Office: Ofax: Home: 203/762-2916 Hfax: E-mail: susangraybill@mac.com
299	Greer, Bob 51 Franca Drive Bristol, RI 02809	Anne	Office: Ofax: Home: 401/396-9133 Hfax: E-mail: bagreer@cox.net
797	Hager, Barbara 783 Garfield Avenue Bridgeport, CT 06606		Office: 203/336-1874 Ofax: Home: 203/336-1874 Hfax: E-mail: msrevjd@optonline.net
299	Hare, David 7371C Vermont Route 155 Belmont, VT 05730	Flo	Office: Ofax: Home: 802/259-3324 Hfax: E-mail: davehare@vermontel.net
797	Hedlund, Lori 4532 Lariat Lane Oakley, CA 94561		Office: Ofax: Home: 925/684-7487 Hfax: E-mail: lori.hedlund@yahoo.com

EOD	Name/Address	Spouse	Available Via:
641/1	Highsmith, Martha First Presbyterian Church 136 Capitol Ave. Hartford, CT 06106		Office: 203/432-2675 Ofax: 203/432-2319 Home: 860/561-4793 Hfax: E-mail martha.highsmith@yale.edu
501	Holleck, Tiffany Nicely St. Peter's Lutheran Church 310 Route 137 Harwich, MA 02645	Christian	Office: 508/432-5172 Ofax: 508/432-5125 Home: 508/385-5575 Hfax: E-mail calledbyname@comcast.net
299	Holt, Carl 9400 Wordsworth Way, #402 Owings Mills, MD 21117		Office: 410/415-6912 Ofax: 410/415-6914 Home: 410/852-7161 Hfax: E-mail ctholt6@comcast.net
797	Hwang, John 344 Racebrook Rd Orange, CT 06477	Ruth	Office: 203/610-1990 Ofax: Home: 203/298-4621 Hfax: 203/298-4621 E-mail hjh.rev@hotmail.com
299	Johnson, Gordon 4911 Lucina Court Ft. Myers, FL 33908		Office: Ofax: Home: 239/466-9812 Hfax: E-mail gorwesjohn@juno.com
101	Johnson, Tracy Christ Presbyterian Church 1597 Allen St. Springfield, MA 01118	Jessica	Office: 413/782-9872 Ofax: Home: 413/783-4097 Hfax: E-mail tracy@christ-pres.org

EOD	Name/Address	Spouse	Available Via:
797	Jun, Matthew ,	Jennifer	Office: Ofax: Home: Hfax: E-mail
299	Jung, Johanna Johns 17 Harmony Trail New Milford, CT 06776	Ernest	Office: Ofax: Home: 860/799-0269 Hfax: E-mail jjjung17@charter.net
701	Jungkeit, Steven 249 Judwin Avenue New Haven, CT 06515	Rachael	Office: Ofax: Home: 203/387-5380 Hfax: E-mail steven@jungkeit.net
299	Keller, James 111 Blueberry Lane Jamestown, RI 02835		Office: Ofax: Home: 401/423-1074 Hfax: E-mail jpkeller2@earthlink.net
299	Kelsey, David 38 Brocketts Point Road Branford, CT 06405	Julie	Office: Ofax: Home: 203/481-0635 Hfax: E-mail david.kelsey@yale.edu
797	Kim, Keun Soo ,	Soon Joo	Office: Ofax: Home: Hfax: E-mail

EOD	Name/Address	Spouse	Available Via:
106	Kim, Sun-Gil Korean Pres. Church of Greater Hartford 585 East Center Street Manchester, CT 06040		Office: 860/643-0537 Ofax: Home: 860/430-9905 Hfax: E-mail s2k102@hanmail.net
301	Kimatu, Joseph Tumaini Presbyterian Fellowship 361 Newhouse Street Springfield, MA 01118	Jane	Office: 413/301-5291 Ofax: Home: 413/301-5291 Hfax: 413/301-5291 E-mail kimatu07@hotmail.com
797	Laird, Kathryn Kibbie 135 Lone Tree Farm Rd. New Canaan, CT 06840		Office: Ofax: Home: 203/283-1992 Hfax: E-mail kibbielaird@yahoo.com
101	LaSala, Maria First Presbyterian Church 704 Whitney Avenue New Haven, CT 06511	Bill Goettler	Office: 203/562-5664 Ofax: 203/562-1202 Home: 203/776-2254 Hfax: E-mail mariasmal@aol.com
653	Lindner, John 26 Fowler Lane Middlefield, CT 06455		Office: 203/432-5363 Ofax: 203/432-5365 Home: 860/349-2425 Hfax: E-mail john.lindner@yale.edu
302	Lindsley, Dana Presbytery of Southern New England 123 Elm Street, #200 Old Saybrook, CT 06475	Janet	Office: 860/388-0874 Ofax: 860/388-5813 Home: 203/245-4778 Hfax: 203/384-5995 E-mail danalindsley@psne.org

EOD	Name/Address	Spouse	Available Via:
299	Line, M. Allen 8 Pontiac Road W. Hartford, CT 06117		Office: Ofax: Home: 860/523-9794 Hfax: E-mail
797	Little-Andrade, Heather 2878 Elm Ave. Dighton, MA 02715		Office: 617/268-1281 Ofax: Home: Hfax: E-mail heatherrittlea@gmail.com
299	Lockhart, James 19 Miles Avenue Tiverton, RI 02878	Sally	Office: Ofax: Home: 401/624-3144 Hfax: E-mail lockhart19@cox.net
299	Loder, Cory P.O. Box 14 N. Egremont, MA 01252	Nancy	Office: Ofax: Home: 413/528-9285 Hfax: 413/528-9285 E-mail cory@coryloder.com
299	Lover, William 13605 Smallpath Court Gainesville, VA 20155	Jackie	Office: Ofax: Home: 703/743-2429 Hfax: E-mail blover1144@comcast.net
299	Ludeman, Ross 90 Athens Road Chester, VT 05143-8536	Ginger	Office: Ofax: Home: 802/869-2852 Hfax: E-mail rludeman@vermontel.net

EOD	Name/Address	Spouse	Available Via:
299	Lundgren, Donald 30 Chapel Road Amherst, MA 01002	Melissa	Office: Ofax: Home: 413/256-0679 Hfax: E-mail dklundgren@comcast.net
105	MacColl, W. Stewart Wilton Presbyterian Church 48 New Canaan Rd. Wilton, CT 06897		Office: 203/762-5514 Ofax: 203/762-0903 Home: 281/615-3549 Hfax: E-mail stewart.maccoll@wiltonpresbyteria
101	Mahan, James Turn of River Presbyterian Church 49 Turn of River Rd. Stamford, CT 06905	Robin Ann	Office: 203/322-5327 Ofax: same Home: 203/595-8333 Hfax: E-mail j_k_mahan@sbcglobal.net
299	Marion, Patricia 4982 Cameron Valley Parkway Charlotte, NC 28210		Office: Ofax: Home: 704/222-3829 Hfax: E-mail pm@patriciamarion.com
101	Maxwell, William First Presbyterian Church 6 Everett Street Newport, RI 02840	Pat	Office: 401/847-1749 Ofax: 401/847-1887 Home: 401/848-4318 Hfax: E-mail billmaxwell@fpcnewport.org
797	McLaren, Nancy 724 Whitney Ave. New Haven, CT 06511		Office: Ofax: Home: 203/584-4149 Hfax: E-mail nancybmclaren@gmail.com

EOD	Name/Address	Spouse	Available Via:
106	McNaughton, Marilyn Babcock Presbyterian Church 25 Maxson St., P.O. Box 188 Ashaway, RI 02804-0188	Marty Legg	Office: 401/377-4917 Ofax: Home: 860/464-5265 Hfax: E-mail formclegg@sbcglobal.net
797	Mehr-Muska, Tracy 244 North Quaker Lane W. Hartford, CT 06119	Scott Muska	Office: Ofax: Home: 860/586-8880 Hfax: E-mail tmehrmuska@yahoo.com
299	Mellon, David 138 Bear Creek Path Ormond Beach, FL 32174	Nancy	Office: Ofax: Home: 386/673-5493 Hfax: call first E-mail NOMDDM@aol.com
701	Mena, Danilo 46 Skymeadow Drive Stamford, CT 06903		Office: Ofax: Home: 203/595-9646 Hfax: E-mail djmena001@yahoo.com
797	Merz, John CT AIDS Resource Coalition 110 Bartholomew Ave., Suite 4000 Hartford, CT 06106		Office: 860/761-6699 Ofax: 860/761-6711 Home: 860/651-7909 Hfax: E-mail john@ctaidcoalition.org
101	Meyerhoffer, Anne Mari United Presbyterian Church 109 Seaside Avenue Milford, CT 06460		Office: 203/874-7088 x 11 Ofax: 203/874-7088 Home: 860/224-8420 Hfax: E-mail RevAMM@yahoo.com

EOD	Name/Address	Spouse	Available Via:
299	Miller, Joseph 80 Touisset Road Warren, RI 02885	Hannah	Office: Ofax: Home: 401/245-5666 Hfax: E-mail hanjoe.miller@gmail.com
299	Minor, Ron Community of Jesus Box 1892 Orleans, MA 02653	Barbara	Office: 508/255-1094 Ofax: Home: 508/255-3321 Hfax: E-mail rminor@c4.net
299	Newberry, Charles (Ter 25 South Street Harwich Port, MA 02646	Barbara	Office: Ofax: Home: 508/432-4411 Hfax: E-mail
299	North, Carol 275 Woodland Rd. Coventry, CT 06238	Frederick	Office: Ofax: Home: Hfax: E-mail carolnorth@usa.net
101	Notley, Patrick Barrington Presbyterian Church 400 County Road Barrington, RI 02806-0004	Katherine	Office: 401/245-2218 Ofax: Home: 401/433-1487 Hfax: E-mail patrick.notley@barrpres.org
653	Olson, Susan 835 Elm Street, Apt. A-1 New Haven, CT 06511		Office: 203/432-9485 Ofax: Home: 203/623-4115 Hfax: E-mail susan.olson@yale.edu

EOD	Name/Address	Spouse	Available Via:
782	Opsahl, Laura 630 Main Street North Southbury, CT 06488		Office: Ofax: Home: 203/264-5117 Hfax: E-mail opsahl.laura@gmail.com
299	Orr, Mark 78 Ledgebrook Drive Norwalk, CT 06854	Dorothy	Office: 203/554-3594 Ofax: Home: 203/354-3168 Hfax: E-mail markorr54@gmail.com
299	Parker, Donald 47 Lafayette Place Greenwich, CT 06830	Alice	Office: Ofax: Home: 203/861-6698 Hfax: E-mail donparker13@me.com
299	Peel, Craig 7516 Cedar Island Dr. Nags Head, NC 27959	Fran	Office: Ofax: Home: 252/480-1667 Hfax: 252/480-1667 E-mail craigpeel@embarqmail.com
299	Perry, Robert 28 Benefit Street Providence, RI 02904	Coline	Office: Ofax: Home: 401/273-7483 Hfax: E-mail
506/2	Pfeil, Susan 275 A Park Street New Canaan, CT 06840		Office: 203/368-3103 Ofax: 203/368-1584 Home: 203/966-7271 Hfax: E-mail Revspfeil@aol.com

EOD	Name/Address	Spouse	Available Via:
299	Phillips, James M. 200 Leeder Hill Drive, Apt. 436 Hamden, CT 06517		Office: Ofax: Home: 203/230-5922 Hfax: E-mail jmphillips@wcres.org
299	Pietsch, William 80 Lyme Road, #347 Hanover, NH 03755	Louise	Office: Ofax: Home: 603/643-6682 Hfax: E-mail wvp@valley.net
299	Pomeroy, George 2 Pine Grove Circle Greenville, RI 02828	Diane	Office: Ofax: Home: 401/349-2476 Hfax: 401/349-2476 call first E-mail gpomeroy@cox.net
299	Poole, Frank 89 Robin Hollow Rd. W. Greenwich, RI 02817-2374	Margaret Webb	Office: 401/294-1120 Ofax: Home: 401/397-4794 Hfax: E-mail fhpoole@cox.net
101	Porizky, Mark St. Andrew Presbyterian Church 310 Fort Hill Road Groton, CT 06340-4804	Barbara	Office: 860/445-8348 Ofax: 860/445-6175 Home: 860/245-5090 Hfax: E-mail MPorizky@comcast.net
299	Porter, Frederick 121 Eileen St. Yarmouth Port, MA 02675	Cindy	Office: 508/790-0114 Ofax: Home: 508/362-0322 Hfax: E-mail revrick129@aol.com

EOD	Name/Address	Spouse	Available Via:
299	Prasse, Barbara 400 Seabury Drive, Apt. 2133 Bloomfield, CT 06002	Edgar	Office: Ofax: Home: 860/243-9887 Hfax: E-mail barbprasse@hotmail.com
299	Prasse, Edgar 400 Seabury Drive, Apt. 2133 Bloomfield, CT 06002	Barbara	Office: Ofax: Home: 860/243-9887 Hfax: E-mail egprasse@sbcglobal.net
105	Prewitt, Michael Calvin Presbyterian Church 126 Angell Road Cumberland, RI 02864	Maureen	Office: 401/333-0355 Ofax: Home: 867/687-1737 Hfax: E-mail pastormichaelp@verizon.net
105	Priest, Joan Withers First Presbyterian Church 392 Laurel Road New Canaan, CT 06840		Office: 203/869-8686 Ofax: 203/869-1745 Home: 203/972-7356 Hfax: E-mail jwpriest@optonline.net
299	Ramos, Jovelino 53 Netherlands Avenue Cranston, RI 02905	Joan	Office: Ofax: Home: 401/781-2691 Hfax: E-mail joveramos@yahoo.com
299	Ramsey, Glenn 71 Second Street Pawtucket, RI 02861	Nancy	Office: Ofax: Home: 401/728-7535 Hfax: E-mail glennramsey@cox.net

EOD	Name/Address	Spouse	Available Via:
701	Ray, Justin 141 Alden Ave New Haven, CT 06515	Julie	Office: 203/437-3111 Ofax: 203/437-3150 Home: Hfax: E-mail justinjray@gmail.com
101	Ribeiro, Paulo Christ is Life Presbyterian Church 228 North Main Street Fall River, MA 02720	Angela	Office: Ofax: Home: 508/567-5565 Hfax: E-mail paulotarso72@gmail.com
797	Robbins, Cynthia 10 Green Valley Lakes Road East Lyme, CT 06333		Office: Ofax: Home: Hfax: E-mail cynrobster@gmail.com
299	Robertson, Frank 4 Canonicus Avenue Newport, RI 02840	Jill	Office: Ofax: Home: 401/841-5053 Hfax: 401/841-5053 E-mail frankjill10@hotmail.com
797	Robertson, Jill 4 Canonicus Avenue Newport, RI 02840	Frank	Office: Ofax: Home: 401/841-5053 Hfax: 401/841-5053 E-mail jilldrobertson@gmail.com
101	Robinson, Graham Westminster Presbyterian Church 2080 Boulevard W. Hartford, CT 06107	Jodi	Office: 860/521-6240 Ofax: 860/521-5733 Home: 860/521-6480 Hfax: E-mail grobinson@westpresby.org

EOD	Name/Address	Spouse	Available Via:
501	Rockness, David Litchfield Congregational Church 21 Torrington Rd. Litchfield, CT 06759	Jodi Lynn	Office: 860/567-8705 Ofax: 860/567-2490 Home: 860/567-8570 Hfax: E-mail dfr-congregation@sbcglobal.net
797	Rodkey, John 56 Meetinghouse Road Pelham, MA 01002		Office: Ofax: Home: 413/259-6969 Hfax: E-mail rodkeyj@gmail.com
101	Roh, Dae Joon New Haven Korean Church 42 Glen Parkway Hamden, CT 06517	EunYoung	Office: 203/287-0110 Ofax: 203/287-7511 Home: 203/745-3111 Hfax: E-mail rev.djroh@gmail.com
299	Ruppart, Ph.D., Randy 10 West Street S. Deerfield, MA 01373		Office: Ofax: Home: 413/665-5076 Hfax: E-mail randallruppart@gmail.com
782	Sandel, John 5 Rogers Avenue Milford, CT 06460	Bonnie	Office: 203/877-7713 Ofax: 203/877-7713 Home: 203/878-3357 Hfax: 203/878-0114 E-mail johns357@aol.com
103	Sausville, gretchen Westminster Presbyterian Church 2080 Boulevard W. Hartford, CT 06107		Office: 860/521-6240 Ofax: Home: 970/405-3176 Hfax: E-mail gsausville@westpresby.org

EOD	Name/Address	Spouse	Available Via:	
101	Schreiner III, Samuel Noroton Presbyterian Church 2011 Post Road Darien, CT 06820	Deb	Office: Ofax: Home: Hfax: E-mail	203/655-1451 203/655-6638 sam.schreiner@norotonchurch.org
654	Shippee, Arthur 72 North Lake Drive Hamden, CT 06517	Mary Porterfield	Office: Ofax: Home: Hfax: E-mail	 203/248-1911 ashippee@snet.net
299	Showalter, William Community of Jesus 20 Defiance Lane Orleans, MA 02653	Carol	Office: Ofax: Home: Hfax: E-mail	508/255-1094 ext. 3549 508/247-3121 508/255-7069 billshow@verizon.net
108	Smanik, Virginia First Presbyterian Church 136 Capitol Avenue Hartford, CT 06106-1619		Office: Ofax: Home: Hfax: E-mail	860/246-2224 860/779-0070 virginia.smanik@gmail.com
103	Smith, Stuart Noroton Presbyterian Church 2011 Post Road Darien, CT 06820	Debra	Office: Ofax: Home: Hfax: E-mail	203/655-1451 203/655-6638 stuart.smith@norotonchurch.org
299	Snell, Georgia Ann 7 Wamasquid Place Box 297 Nantucket, MA 02554-0297		Office: Ofax: Home: Hfax: E-mail	 508/325-4547 508/228-5582 snellhotel@gmail.com

EOD	Name/Address	Spouse	Available Via:
108	Soares, Denise Calvary Presbyterian Church P.O. Box 4101 Fall River, MA 02723	Ed	Office: 508/673-4738 Ofax: Home: 401/624-8891 Hfax: E-mail dsoares5@cox.net
299	Soares, Edward 979 Old Stafford Rd. Tiverton, RI 02878	Denise	Office: Ofax: Home: 401/624-8891 Hfax: E-mail dsoares5@cox.net
108	Speers, Thomas First Presbyterian Church 136 Capitol Avenue Hartford, CT 06106-1619	Bessie	Office: 860/246-2224 Ofax: Home: 860/217-1280 Hfax: E-mail speerstg@gmail.com
105	Stanford, Katherine First Presbyterian Church 178 Oenoke Ridge New Canaan, CT 06840	Brian Crawley	Office: 203/966-0002 Ofax: Home: 914/948-6462 Hfax: E-mail katherine@fpcnc.org
741	Sugg, Robert 1064 Gumwood Avenue Grand Forks AFB, N.D. Grand Forks, ND 58204	Karen	Office: Ofax: Home: 401/316-5097 Hfax: E-mail rob_sugg@juno.com
643	Sullivan, Thomas 5 Prentiss Place Medfield, MA 02052-1652	Amy	Office: 617/243-2059 Ofax: Home: 508/359-6575 Hfax: E-mail thomaspsullivan@verizon.net

EOD	Name/Address	Spouse	Available Via:
299	Sundquist, Ralph 400 Seabury Drive, Apt. 5173 Bloomfield, CT 06002	Bernita	Office: Ofax: Home: 860/242-0626 Hfax: E-mail rrsundquist@gmail.com
701	Sweet, John 29 Buckley Avenue West Warwick, RI 02893		Office: 401/462-0122 Ofax: Home: 401/474-0892 Hfax: E-mail jdsweet805@cox.net
501	Tate, Chris Second Congregational Church 139 E. Putnam Ave. Greenwich, CT 06830	Lauren	Office: 203/869-9311, ext. 25 Ofax: 203/862-8624 Home: 203/966-2331 Hfax: E-mail chris@2cc.org
791	Teague, David 433 Warren Wright Rd. Belchertown, MA 01007	Sally	Office: 413/549-0623 Ofax: Home: 413/549-0623 Hfax: E-mail davidteague77@gmail.com
101	Terry, Paul Faith Presbyterian Church 499 Hope Road Cranston, RI 02921-2740	Priscilla	Office: 401/822-2070 Ofax: 401/823-4370 Home: 401/943-2178 Hfax: E-mail fpcpstr@aol.com
101	Thayer, Steve Calvary Presbyterian Church 1518 King Street Enfield, CT 06082	Melissa	Office: 860/745-5211 Ofax: 860/745-6508 Home: 860/741-7695 Hfax: E-mail calvary.presbyterian@snet.net

EOD	Name/Address	Spouse	Available Via:
505	Therese, Barbara Park Congregational Church 283 Broadway Norwich, CT 06360		Office: 860/887-3747 Ofax: 860/887-7821 Home: Hfax: E-mail revbarb@comcast.net
101	Thies, Mary Marple First Presbyterian Church 1101 Bedford Street Stamford, CT 06905	Armin	Office: 203/324-9522 Ofax: 203/348-5229 Home: 203/321-8568 Hfax: E-mail mmt@fishchurch.org
644	Troeger, Thomas 56 Hickory Rd. Woodbridge, CT 06525		Office: Ofax: Home: 203/389-7766 Hfax: E-mail thomas.troeger@yale.edu
299	Trucksess, Susan Pow 45 Quarry Dock Road Branford, CT 06405		Office: Ofax: Home: 203/315-8144 Hfax: E-mail jim45suz@sbcglobal.net
791	Unsell, Frances 5 Brook St., # 14 Darien, CT 06820		Office: 203/655-9414 Ofax: Same Home: 203/366-1973 Hfax: E-mail francesausnell@aol.com
299	Unsworth, Richard 51 Huckleberry Lane Easthampton, MA 01027	Joy	Office: Ofax: Home: 413/529-7130 Hfax: 781/730-0241 E-mail rpu@mac.com

EOD	Name/Address	Spouse	Available Via:
299	Van Deusen, Richard 292 Grindstone Hill Road North Stonington, CT 06359-1137	Lois	Office: Ofax: Home: 860/535-3634 Hfax: E-mail R_Van_Deusen@msn.com
101	Van Dyke, David First Presbyterian Church 1101 Bedford Street Stamford, CT 06905		Office: 203/324-9522 Ofax: 203/348-5229 Home: 203/357-1646 Hfax: E-mail drvd@fishchurch.org
299	VanDerbeck, Holmes ,		Office: Ofax: Home: Hfax: E-mail
299	Veon, Robert Kairos Cove P.O. Box 289 Monson, ME 04464-0289	Susan	Office: Ofax: Home: 207/977-3909 Hfax: E-mail rveon@kvcc.me.edu
701	Vought, Rick P.O. Box 2666 Orleans, MA 02653	Ruth	Office: 774-722-0441 Ofax: Home: 508/255-6384 Hfax: E-mail rickvought@yahoo.com
101	Watermulder, David Providence Presbyterian Church 500 Hope Street Providence, RI 02906-1641	Lisa	Office: 401/861-1136 Ofax: 401/861-1136 Home: Hfax: E-mail david.watermulder@gmail.com

EOD	Name/Address	Spouse	Available Via:
299	Webster, John 53 Oswegatchie Rd. Waterford, CT 06385	Penny	Office: Ofax: Home: 860/443-6741 Hfax: E-mail pjwebster@att.net
299	West, Frank 17 East River Road Guilford, CT 06437	Martha	Office: Ofax: Home: 203/453-9699 Hfax: E-mail
644	Wills, David 47 Stagecoach Road Amherst, MA 01002-3527	Carolyn	Office: 413/542-2470 Ofax: Home: 413/259-0046 Hfax: E-mail dwwills@amherst.edu
701	Willson, Barbara Sterli 10 Park Street W. Yarmouth, MA 02673	John	Office: Ofax: Home: Hfax: E-mail bswillson51@yahoo.com
505	Winter, Jeffrey Faith Community Church Box 158 Oak Bluffs, MA 02557	Judy	Office: 508/687-9097 Ofax: Home: 508/687-9097 Hfax: 508-607-9097 E-mail jwinter777@aol.com
299	Witter, Thomas Thirwood Place, Apt. 145 237 North Main Street S. Yarmouth, MA 02664	Jane	Office: Ofax: Home: 774/722-0677 Hfax: E-mail tomw@c4.net

EOD	Name/Address	Spouse	Available Via:
299	Wood, Jeffrey 120 Midland Street Bridgeport, CT 06605		Office: Ofax: Home: 203/556-8342 Hfax: E-mail drjeffreycwood@aol.com
701	Wright, Heather 26 Waverly Rd. Darien, CT 06820		Office: 203/618-4236 Ofax: Home: 203/202-9112 Hfax: E-mail hparky@optonline.net



OUR CHURCHES

Titles are given to pastors by churches and are not necessarily in accordance with the Book of Order.

ASHAWAY, Rhode Island

BABCOCK PRESBYTERIAN CHURCH

25 Maxson Street, P.O. Box 188
Ashaway, RI 02804-0188

Phone: 401/377-4917

Rev. Marilyn McNaughton, Stated Supply Pastor
Elder Jennifer Adams, Clerk of Session

Worship: 9:30 a.m.

I-95 South from Providence – RI Exit One. At the end of the ramp turn right onto Route 3 heading south toward Westerly. Proceed south about 2 miles into and through the village of Ashaway to the only yellow flashing caution light. Turn right at light onto Maxson Street. There is a sign on the corner. The church is 200 yards down on left (just beyond fourth house). Parking both “above” near the front door and “behind” near the back entrance to the Fellowship Hall.

I-95 North from Connecticut – RI Exit One. At end of ramp turn left onto Route 3 and follow above directions.

BARRINGTON, Rhode Island

BARRINGTON PRESBYTERIAN CHURCH

400 County Road
Barrington, RI 02806-0004

Phone: 401/245-2218

The Rev. Patrick Notley, Pastor
The Rev. Joe Miller, Parish Associate
Elder Karen Drolet, Clerk of Session

Worship: 10:00 a.m. year-round

Email: bpc400@barrpres.org

Website: www.barrpres.org

Blog: www.barringtontable.wordpress.com

Exit from I-95 to I-195 East. Take Exit 7 (Barrington-Seekonk) bearing right on RI Route 114 and proceed into Barrington past one traffic light, straight ahead on County Road for one and a half blocks and turn to the right into Church parking lot. (Six miles from I-195-E, ramp #7, to Barrington P.C.)

BROOKFIELD, Connecticut

VALLEY PRESBYTERIAN CHURCH

21 West Whisconier Road
Brookfield, CT 06804

Phone: 203/775-2624

Fax: 203/775-3263

Website: www.danbury.org/vpc

Email: rabeams@sbcglobal.net

The Rev. Dr. Mark A. Horton (UCC), Interim Pastor
Elder Jim Munn, Clerk of Session
Geraldine Willmann, Administrative Assistant

Worship: 10:00 AM

From I-84 (East or West) - Use Exit 9 (Hawleyville). At the end of ramp turn north onto Route 25 North for about 1 1/2 miles. Turn left onto West Whisconier Road. Church is just past Whisconier School on the left.

CRANSTON, Rhode Island

FAITH PRESBYTERIAN CHURCH

499 Hope Road
Cranston, RI 02921-2740

The Rev. Paul A. Terry, Pastor
Elder Claire Motta, Clerk of Session

Phone: 401/822-2070
Fax: 401/823-4370
E-mail: fpcpstr@aol.com
Website: www.faithonhope.org

Worship: 9:30 a.m.
Sunday School 11:00 a.m.

From South: Take I-95 to I-295 north and proceed to Exit 3B (Phenix Avenue - Route 37). Take Exit 3B onto Route 37 west to end (approximately 1/4 mile) traveling in left lane. Turn left at traffic light and go to next intersection at light. At light make a right turn (Wilbur Avenue). Go up hill, turn right at top, go to stop sign at Phenix Avenue. Go straight ahead, road becomes Hope Road. Pass Hope Highlands Elementary School and Phippen Orchard Road. Church is across from fire station.

From North: Take I-295 south to Exit 3B (Phenix Avenue - Route 37). Take Exit 3B onto Route 37 west to end (approximately 1/4 mile) traveling in left lane; or take I-95 south to Exit 14. Bear right ("Cranston") onto Route 37 west. Move into left lane prior to coming to end of Route 37 (approximately 1 1/2 miles after exiting I-95). Turn left at traffic light and go to next intersection at light. Make a right turn at light onto Wilbur Avenue. Go up hill, turn right at top, go to stop sign at Phenix Avenue. Go straight ahead, road becomes Hope Road. Pass Hope Highlands Elementary School and Phippen Orchard Road. Church is across from fire station.

CUMBERLAND, Rhode Island

CALVIN PRESBYTERIAN CHURCH

126 Angell Road
Cumberland, RI 02864-5098

The Rev. Dr. Michael Prewitt, Interim Pastor
Elder Peter Cameron, Clerk of Session
Pam Marcil, Church Administrator

Phone: 401/333-0355
Church e-mail: calvinpres@juno.com
Website: www.calvinpres.org

Worship: please call

I-95 North. Take 295 North exit 11 (toward Boston) which will be on the left. On 295 North, take second Cumberland exit, #11, (Route 114). Go right 1/4 mile, turn right at that intersection and proceed 1/2 mile. Calvin Church is on the right.

DARIEN, Connecticut

NOROTON PRESBYTERIAN CHURCH

2011 Post Road
Darien, CT 06820-3401

[Rev. Samuel A. Schreiner](#), III, Senior Pastor
[Rev. Greg Doll](#), Pastor, Adult Spiritual Formation and Outreach Ministries
[Rev. Stuart Smith](#), Pastor, Youth Ministries
[Rev. Brandi Drake](#), Pastor, Caring and Women's Ministries
[Linda Yim](#), Interim Dir. of Children's Ministries [Dan Rosa](#), Business Administrator
[Leslie Ezzo](#), Executive Assistant to the Pastor
[Dwayne Condon](#), Dir. Music /Fine Arts
[Elder George Vogel](#), Clerk of Session

Phone: 203/655-1451
FAX: 203/655-6638
www.norotonchurch.org

Worship: 8:00, 9:00,
10:30 a.m., 5:00 pm
Summer: 8:00 a.m @
Weed Beach
10:00 a.m. in the Chapel

From Interstate 95:

North from New York: Take Exit 10 (Noroton). Turn right (south) off exit ramp onto Noroton Avenue. Go straight through one traffic light. Noroton Avenue ends at US 1 (Post Road) less than one mile from I-95. Church is on right at corner of Noroton and US 1. Park in rear of church.

South from New Haven: Take Exit 10 (Noroton). Merge left onto access road (Ledge Road). Ledge Road ends at Noroton Avenue. Turn left (south) and follow directions above.

From Merritt Parkway (Route 15):

North from New York: Take Exit 37 (New Canaan/Darien). At end of exit ramp turn right (south) onto Route 124 (Mansfield Avenue) towards Darien. Follow 124 south through 2 traffic lights and 1 flashing light, approximately 3.1 miles, until it ends at US 1 (Post Road). Turn right onto US 1 West (Post Road). Go approximately 1.6 miles through 9 traffic lights. Turn right at 10th light onto Noroton Avenue. Park in rear of church.

South from New Haven: Take Exit 37 (New Canaan/Darien). Turn right (south) at the end of exit ramp onto Route 124 and follow directions above.

ENFIELD, Connecticut

CALVARY PRESBYTERIAN CHURCH

1518 King Street
Enfield, CT 06082

Phone: 860/745-5211
Fax: 860/745-6508
E-mail: calvary.presbyterian@snet.net

The Rev. Steven L. Thayer, Pastor
Elder Richard Sterling, Clerk of Session
Rick Wezowicz, Church Administrator
Joan Lawson, Director of Discipleship

Worship: 9:00 & 11:15 a.m.
Summer: 9:00 & 10:30 a.m.

From Hartford - I-91 North, exit 46 (Route 5, King Street). At the end of ramp turn right onto Route 5. Proceed north beyond the divided highway. Watch for church on left. Turn hard left immediately at the end of the grass median strip onto Old King Street. Take first left into church parking lot.

From Springfield - I-91 South, Exit 47W (Suffield, Route 190W and Route 5). After coming onto Route 190W bear right immediately to approach Route 5. Turn left (south) on Route 5. Proceed south about 2 1/2 miles passing four traffic lights to the divided highway. The church will be on the right immediately after grass median strip begins. Enter parking lot via first right after median begins.

FAIRFIELD, Connecticut

FIRST PRESBYTERIAN CHURCH

2475 Easton Turnpike
Fairfield, CT 06825

Phone: 203/374-6176
FAX 203/374-1643
www.FirstPresby.Net
All staff may be reached through website.

The Rev. F. Edward Duffy, Pastor
PJ Drost, Director of Christian Education and Youth
Ministries Elder Clare Schimpf, Clerk of Session
Katie Parisi, Church Secretary
Kathy Wells, Financial Secretary
Laurie Birch, Music Director

Worship/Sunday School: 10:00 a.m.

From New York - Exit 46 off the Merritt Parkway. At the traffic light turn right and at the next light turn left onto Route 59.
From New Haven - Exit 46 off Merritt Parkway. Turn right to the traffic light and then right at the traffic light onto Route 59.

The church is 3/4 mile south of Exit 46 of the Merritt Parkway on Route 59.

FALL RIVER, Massachusetts

CALVARY UNITED PRESBYTERIAN CHURCH

216 Harrison Street
Fall River, MA 02723

Phone: 508/673-4738

[The Rev. Denise S. Soares](#), Temporary Supply
Elder Louis Bitar, Clerk of Session

Worship: 10:00 a.m.
Summer Worship (July & August): 9:00 & 10:00
Children's Sunday School: 10 a.m. (school year)
Communion: 1st Sunday of every month

In Massachusetts take Exit #7 off 195E, turn left onto Plymouth Avenue, pass under 195E and turn right at the Minuteman Statute onto Pleasant Street. At Quequechan Street turn right, then left onto Alden Street, then left onto Harrison Street. Church is on the right.

CHRIST IS LIFE PRESBYTERIAN CHURCH

c/o First Baptist Church
228 N. Main Street
Fall River, MA 02720

Phone: 508/673-4780

Rev. Paulo de Tarso Ribeiro, Pastor
Elder Sonia de Lima, Clerk of Session

From the West on Route 195, take the Rt. 79N Exit at the end of the Braga Bridge. When you take exit 79N keep left. The exit for Milliken Blvd. is **off of the exit ramp not at the end of the exit ramp!** Proceed North through the traffic Light at Central Street one block to Bank Street. Turn right on Bank Street (the Armory is on the corner) and go one block to Main Street. Turn left on Main Street and proceed North for two blocks to the Church on your left, across from the YMCA.

From the East on Route 195, take the Pleasant Street Exit. Take the first left on 10th Street one block to Bedford Street. Turn left, proceed to the third traffic light. Turn right on Main Street for four blocks to the Church. Parking is available either along Main Street or in the lots to the left on Pine Street or just after the Y on Main Street.

UNITED PARISH OF FALL RIVER

745 Wilson Road
Fall River, MA 02720

Phone: 508/679-6835

Fax: 508/677-1669

E-mail: Uparish@verizon.net

The Rev. Stan Duncan, Interim
Sara Lundquist, Clerk of Session

Worship: 10:00 a.m.

Summer: 10:00 a.m.

From the West -Take Route 195 East. Go over the Braga Bridge and stay on Route 195 until you reach Route 24 North. Take Route 24 North and follow the directions from the South.

From the East - Take I-195 west. Then take Route 24 North and follow the directions from the South.

From the North-Take Route 24 South. Take Exit 6, "Highland Avenue." At the first stoplight take a left on Wilson Road. Proceed until you have gone over a highway overpass. The church is immediately on the right.

From the South-Take Route 24 North. Take Exit 8, "Airport Road." Take a left off the exit ramp. When you come to the rotary, take the first right onto Route 24 South. Then take Exit 6, "Highland Avenue." At the first stoplight take a left on Wilson Road. Proceed until you have gone over a highway overpass. The church is immediately on the right.

GRANBY, Massachusetts

FIRST PRESBYTERIAN CHURCH in the Meadows

160 W. State Street, Box 455
Granby, MA 01033-0455

Phone: 413/532-6983

E-mail: info@PioneerPresbyterian.org

Website: www.PioneerPresbyterian.org

Vacant, Pastor
Elder Matthew Peterson, Clerk of Session
Dr. Catherine Lee, Church Administrator
Mr. Roger Farnsworth, Minister of Music

10:00 a.m. Worship

From CT and Springfield, MA:

I-91 North to I-391 towards Holyoke; exit at Main St., Holyoke and continue through town, following Route 116 North across the Connecticut River. At the end of the road, turn left (still route 116); in ½ mile, merge onto US 202 East. Continue East through two traffic lights (5 miles) to 160 West State Street on the right.

From Eastern and Western MA (along the Mass Pike):

I-90 to I-91 north. Exit 16, US 202 East, follow through Holyoke and across the Connecticut River. Continue East on US 202 around the rotary, and through two traffic lights (5 miles) to 160 West State Street on the right.

GREENWICH, Connecticut

FIRST PRESBYTERIAN CHURCH

1 W. Putnam Ave.
Greenwich, CT 06830

Phone: 203./869-8686
Fax: 203/.869-1745
Email: info@fpcg.org
Web: www.fpcg.org

The Rev. Dr. William A. Evertsberg, Senior Minister: william.evertsberg@fpcg.org
The Rev. Joan W. Priest, Interim Associate Pastor: joan.priest@fpcg.org
Donald E. Hibbard, Church Business Administrator: donald.hibbard@fpcg.org
Carolyn Hahn-Re, Church Secretary/Assistant to Sr. Minister: carolyn.hahn-re@fpcg.org
Joshua D. Thomsen, Director of Youth and Communications: joshua.thomsen@fpcg.org
Elder Annette Goard, Clerk of Session: agoard@optonline.net

Directions are also available at our website: www.fpcg.org.

Off Merritt Parkway from New York. Go north on Merritt Parkway (State Route 15) to Lake Avenue exit (Exit 29). Turn right at stop sign onto Lake Avenue. Follow Lake Avenue approximately 6 miles. Go $\frac{3}{4}$ of the way around the traffic circle and continue on Lake Avenue. Bear right at the next traffic circle onto Lafayette Place. Church is on the right at the end of the street.

Off Merritt Parkway from Connecticut. Go south on Merritt Parkway (Route 15) to North Street exit (Exit 31). Turn right onto North Street and follow south for 5-6 miles. At "T" intersection with North Maple Avenue, turn left. Turn right at traffic light onto West Putnam Avenue. Turn right at third light onto Lafayette Place. Church is on the left.

Off I-95 from New York. Go north on I-95 to Arch Street exit (Exit 3). Turn left at end of ramp. Proceed under railroad bridge through intersection. Bear left up Sound View Drive. Bear right onto Field Point Road at top of hill. Bear left at second traffic light, continuing on Field Point Road. Turn right onto West Putnam Avenue (State Route 1) at traffic light. Turn left onto Lafayette Place at 3rd light; church is on the left.

Off I-95 from Connecticut. Go south on I-95 to Arch Street exit (Exit 3). Turn right at end of ramp. Proceed under railroad bridge through intersection. Follow directions above.

GROTON, Connecticut

ST. ANDREW PRESBYTERIAN CHURCH

310 Fort Hill Road
Groton, CT 06340-4804

Phone: 860/445-8348
Fax: 860/445-6175
E-mail: office@sapc-ct.org
Website: www.sapc-ct.org

The Rev. Mark E. Porizky, Pastor
Elder Ray Parker, Clerk of Session
Eileen Newton & Dr. Robert Newton, Ministers of Music
Kelley Crabb, Church Secretary

Traveling to Groton on I-95 from either direction, get off at Exit 88 marked Route 117 (North Road). If coming from the east, turn left at the end of the exit ramp; if coming from west, turn right at the end of the exit ramp. Proceed south on Route 117 to Route 1 (about one mile). Turn left on Route 1, proceed up the hill 7/10 mile. The church driveway is on the left just before a traffic rotary at the top of the hill.

HAMDEN, Connecticut

NEW HAVEN KOREAN CHURCH

42 Glen Parkway
Hamden, CT 06517

Phone: 203/287-0110
Fax: 203/287-7511
E-mail: rev.djroh@gmail.com
Website: www.newhavenchurch.org
Worship: 8:00 a.m. Korean
9:30 a.m. English
11:45 a.m. Korean/English translation

Rev. Dae Joon Roh, Pastor
Elder Sam Chung, Clerk of Session

Note: **Access to Church is via Short Hill Road**

From New York and Rhode Island: I-95 to I-91. Off I-91 take Exit 6, Willow Street. Proceed on Willow Street west several blocks until it dead ends at Whitney Avenue. Turn right (north) onto Whitney Avenue. Proceed approximately 3.5 miles passing Glen Parkway. At next right turn onto Short Hill Road. Church is on your right.

From the North: I-91 South to Exit 17 to Route 15 (Wilbur Cross Parkway). Off Route 15 take Exit 61, Whitney Avenue. At the stop sign, turn right and proceed southbound for 1 mile. Go through two traffic lights. At next left turn onto Short Hill Road. Church is on your right.

From the South: Route 15, Wilbur Cross Parkway. Off Route 15 take Exit 61, Whitney Avenue. At the stop sign turn left and proceed southbound for 1 mile. Go through two traffic lights. At next left turn onto Short Hill Road. Church is on your right.

HARTFORD, Connecticut

FIRST PRESBYTERIAN CHURCH

136 Capitol Avenue
Hartford, CT 06106

Phone: 860/246-2224

E-mail: fpchartford@sbcglobal.net

Website: www.firstpreshartford.org

Revs. Jinny Smanik, Martha Highsmith, Tom Speers,
Temporary Stated Supply Pastors
Elder Jane Murray, Temporary Clerk of Session
Ruth Van Anden, Church Secretary/Administrator

Worship: 10:30 a.m.

From the South: Take I-91 North to Hartford. Use the Capitol Area Exit #29A. Follow the exit ramp to the circle. Go 3/4 way around the circle to Hudson Street. Turn right onto Hudson Street and go one block to the traffic light at Capitol Avenue. Turn right onto Capitol Avenue and proceed two blocks to the church which will be on the right. (You can follow the blue "Hospital" signs from I-91 to Capitol Avenue.)

From the North: Take I-91 South to Hartford. Use the Capitol Area Exit #29A. Follow directions above.

From the West: Take I-84 East to Hartford. Use Capitol Avenue Exit #48. Turn left onto Capitol Avenue and proceed past two traffic lights to the church which will be on the left. (Note: You will pass the State Capitol and the Bushnell Memorial Auditorium on the left.)

From the East: Enter Hartford via Route 2 West. If you are on I-84 this is exit #54, Downtown Hartford. After crossing the Connecticut River on the Founders Bridge you will turn left onto Columbus Avenue which has now reopened. Turn right onto Arch Street, left onto Main, and right onto Capital Avenue. Pass one traffic signal and several surface parking lots and the Church is on your right.

Parking: The church owns a small parking lot on the east side of the church, and in front of the educational and office wing. In the evenings and on weekends there is ample parking available in the State-owned lots across the street from the church on Capitol Avenue and just east of the church on Capitol Avenue.

MILFORD, Connecticut

UNITED PRESBYTERIAN CHURCH

109 Seaside Avenue
Milford, CT 06460

Phone: 203/874-7088

Fax: 203/874-7088

E-mail: upcmilfordct@aol.com

Website: www.pcusamilford.org

The Rev. Anne Marie Meyerhoffer, Pastor
Elder Stephanie Brackett, Clerk of Session
Sylvia Wanta, Secretary

Worship: 10:00 a.m.

July-August worship: 9:00 a.m.

Sunday school (all ages) 9 a.m.

Take I-95 to Exit 36 (Plains Road, Milford). Follow signs to Milford Hospital going south 1 mile on Plains Road to a "T" intersection. Turn left at light and pass hospital on right. At "Emergency" sign just past hospital, turn right on Seaside Avenue. Go south 1/2 mile to Church on left (Kinloch Street).

Take Route 15 to Exit 55. If traveling North, take right at exit, go to Wheeler's Farm Road (if traveling south, exit puts you on

Wheeler's Farm Road). Turn left onto Wheeler's Farm Road, following past Route I-95, cross Route 1 (Wheeler's Farm Road has now become High Street). Continue to the Milford Green. Turn right on North Broad, take the first left, turn right, and take an immediate left onto Seaside Avenue. Go 1/2 mile to church on left.

NEW CANAAN, Connecticut

FIRST PRESBYTERIAN CHURCH

178 Oenoke Ridge
New Canaan, CT 06840

Phone: 203/966-0002

Fax: 203/966-0137

E-mail: info@fpcnc.org

Rev. Paul E. Gilmore, Interim Pastor
Rev. Katherine A. Stanford, Interim Associate Pastor
Elder Cathy Newman, Clerk of Session
Dr. Sean P. McCarthy, Minister of Music
Chuck McCollum, Church Administrator
Tina St. Armand, Office Manager

Worship: 10:00 a.m.

Summer: 9:30 a.m.

Take Exit 37 off Merritt Parkway marked "Route 124, Darien-New Canaan." Follow sign to New Canaan. You will come to three stoplights. At the third light, turn right. Follow signs for Route 124, turn left at the next corner. Follow the curving road left through two more stop lights. Keep on 124 past the fire station and over the hill. At the top of the hill the road makes a 90 degree right turn - this is now Oenoke Ridge. Pass the Episcopal Church on the right side of the road. The Presbyterian Church is on the left.

NEW HAVEN, Connecticut

CONNECTICUT KOREAN PRESBYTERIAN CHURCH

305 St. Ronan Street (OFFICE ONLY)
New Haven, CT 06511

Phone: 203/497-9744

Website: www.connecticutkoreanchurch.org

Rev. Hyoke Chae, Stated Supply
Elder Charles Kim, Clerk of Session

Worship: 1:00 p.m.

From east and west: I-95 to I-91 North. Take Exit 3 (Trumbull Street) off I-91. Follow Trumbull to second traffic light (Whitney Avenue). One block past Willow on right is 450 Whitney Drive. CT Korean Pres. is located in the Lutheran Church.

From Hartford: I-91 South to Exit 6 (Willow Street). At end of ramp turn right on Willow. Follow Willow until it ends on Whitney Avenue and 450 Whitney Avenue is less than 1 block on the right. CT Korean Pres. is located in the Lutheran Church.

FIRST PRESBYTERIAN CHURCH

704 Whitney Avenue
New Haven, CT 06511

Phone: 203/562-5664

Fax: 203/562-1202

Website: www.fpcnh.org

[The Rev. Maria La Sala](mailto:maria@mariasmail@aol.com), Co-Pastor <mailto:mariasmail@aol.com>

[The Rev. Bill Goettler](mailto:wgoettler@aol.com), Co-Pastor <mailto:wgoettler@aol.com>

The Rev. Nancy McLaren, Dir. of Children's & Family Ministry

Elder Dick Hasbany, Clerk of Session

Worship: 10:45 a.m.

Summer: 9:30 a.m.

Take Exit 6, Willow Street, off I-91. Proceed on Willow Street west several blocks until it dead-ends into Whitney Avenue. Turn right (north) on Whitney four blocks to corner of Huntington and Whitney. Church is on the northwest corner of Whitney and Huntington.

From southeast or southwest Connecticut take I-95 to reach I-91.

NEWPORT, Rhode Island

FIRST PRESBYTERIAN CHURCH

6 Everett Street
Newport, RI 02840

Phone: 401/847-1749

Fax: 401/847-1887

E-mail: secretary@fpcnewport.org

Website: www.fpcnewport.org

[The Rev. Dr. William Maxwell](#), Pastor billmaxwell@fpcnewport.org

[Daryl Kolator](#), Clerk of Session dg.kolator@cox.net

[Lee Edwards](#), Church Administrator/Secretary

Worship: 10:30 a.m.

Summer: 9:30 a.m.

From Providence: Route 195 East to Fall River. Route 24 from Fall River to Newport. Crossing the Sakonnet River Bridge, take the expressway to its conclusion. This is West Main Road (Rt. 114). Take it eight (8) miles to the church. It is the same road but becomes Broadway in Newport. The Church is three blocks below Newport Hospital, two blocks above City Hall and next to Dunkin Donuts on Broadway.

From Springfield: Massachusetts Turnpike to Route 146. Route 146 to Providence, then I-95 to 195. Proceed as in Providence directions above. A total of 110 miles.

From Hartford: Route 2 to Route 11 to Route 85 heading for New London. Take I-95 North to Kingston Interchange Exit (Route 138). Follow Route 138 to the Newport Bridge (\$4 toll each way on the bridge). As you cross Newport Bridge follow expressway ramp to second exit (left lane). This will curve around and you will face Newport Grand. At stop light go left, up the hill, past Newport Grand, through one stoplight and to the second traffic light, at the top of the hill. Turn right onto Broadway. The church is one mile on the left side of Broadway.

From Southeastern Connecticut: I-95 North to Kingston Interchange Exit (Route 138). Proceed as in Hartford directions above. 100 miles from New Haven - approximately 2 1/4 hours driving time.

Parking: Off street at the schoolyard entered on Cranston Street, 1/2 block north of church behind the Post Office.

OLD GREENWICH, Connecticut

PRESBYTERIAN CHURCH OF OLD GREENWICH

38 West End Avenue
Old Greenwich, CT 06870

Phone: 203/637-3669

Fax: 203/698-1370

E-mail: office@pcogonline.org

Website: www.pcogonline.org

The Rev. Dr. William J. (Bill) Gestal, Jr., Pastor

Elder Walter Baker, Clerk of Session

Angelo Natalie, Minister of Music

Lisa Steigerwald, Administrative Secretary

Worship: 9:30 a.m.

Prayer & Healing Service, 2nd Sunday at 6:00 p.m.

I-95 to Exit 5. Turn right onto US 1. At next light turn right onto Sound Beach Avenue; go one mile, turn right at Old Greenwich traffic light onto West End Avenue.

PROVIDENCE, Rhode Island

PROVIDENCE PRESBYTERIAN CHURCH

500 Hope Street
Providence, RI 02906-1641

Phone: 401/861-1136

Fax: 401/861-1136

<mailto:provpresri@netzero.net>

www.provpresri.org

The Rev. Christine Johnson Foster, Co-Pastor

The Rev. David G. Watermulder, Co-Pastor

Elder Lori Girard, Clerk of Session

Worship: 10:00 a.m.

From the North: I-95 to Exit 24, Branch Avenue. At end of ramp, turn left onto Branch Ave. (See below.)

From the Northwest: Route 146 South to Branch Avenue exit. At end of ramp, turn left onto Branch Ave. Go about 1 1/4

mile, crossing over I-95. (Follow “From Branch Avenue” directions below.)

From the East: I-195 to I-95. Go north on I-95 to exit 24. (Follow “From Branch Avenue” directions below.)

From the West: Follow U.S. Route 6 to I-95. Go north on I-95 to exit 24. (Follow “From Branch Avenue” directions below.) Use caution as Route 6 follows several different highways as it enters the greater Providence area. As you approach the downtown area, you will always want to be in the left lane to reach I-95 northbound.

From the South: I-95 to Exit 24, Branch Avenue. At end of ramp, bear right onto Branch Ave. Then follow “From Branch Avenue” directions below.

From Branch Avenue: At traffic lights at North Main Street, stay in middle lane so as to cross over North Main Street and go up Cypress Street hill. Continue up Cypress Street, across Camp Street to Hope Street. Turn right onto Hope Street. Church is one block south on right at the corner of Mt. Hope Avenue.

SPRINGFIELD, Massachusetts

CHRIST PRESBYTERIAN CHURCH

1597 Allen Street
Springfield, MA 01118

[The Rev. Tracy Johnson](#), Pastor
Elder Cheryl Turnbull, Clerk of Session

Phone: 413/782-9872
E-mail: tracy@christ-pres.org
www.christ-pres.org

Worship: 9:30 a.m.
Sunday school, 11:00 a.m.

From the North: I-91 to Exit #4 (marked “Route 83, East Longmeadow”). At bottom of ramp there are two left turns in a row under I-91. Take the 2nd left and go straight through the first set of lights. Immediately take your next right onto Longhill Street and continue up the hill to set of lights at the top. Turn left onto Sumner Avenue. Stay on Sumner Avenue for 2.5 miles until it intersects with Harkness Road. There Sumner Avenue becomes a one-way, two-lane street and its name changes to Allen Street. Follow Allen Street for 1 mile then bear right staying on Allen Street. The church is .4 miles farther on the left.

From the South: I-91 North from Hartford. Cross MA state line, take Exit #2 (marked “Routes 21 and 83; East Longmeadow”). You will exit up a hill. At the top of hill follow traffic flow through one light. At next light, turn right onto Sumner Avenue. Stay on Sumner Avenue for 2.5 miles until it intersects with Harkness Road. There Sumner Avenue becomes a one-way, two-lane street and its name changes to Allen Street. Follow Allen Street for 1 mile then bear right staying on Allen Street. The church is .4 miles farther on the left.

From the East or West: MA Turnpike to Exit #7 (Ludlow). Turn left after toll booth onto Route 21 South. Follow this curving street through Ludlow and as it crosses a bridge into the Indian Orchard section of Springfield. Turn right at end of bridge and left at next light. Keep straight on Route 21 (now Parker Street) through Boston Road intersection (Route 20). Follow approximately 1 3/4 miles to Wilbraham Road intersection. Continue straight (now Cooley Street) for another 1 1/2 miles to Allen Street. Turn right and the church is down about 1/5 mile on right.

MARTIN LUTHER KING, JR., COMMUNITY PRESBYTERIAN CHURCH

14 Concord Terrace
Springfield, MA 01109

Pastor, Vacant
Elder Lisa Baker, Clerk of Session

Phone: 413/737-0777
Fax: 413/732-6686
Hours: 11-1 Monday and Friday
9-1 T, W, Th.
Worship: 10:00 a.m.

From the East: Take MA Turnpike to I-291 South. Take Exit #4 (St. James Ave.). At end of ramp (traffic light) turn left (on divided street) and immediately left again onto St. James Street (toward Springfield.) Continue on St. James about 1 mile to traffic light at State Street. Turn left onto State Street/Wilbraham Road. Stay on right of median on Wilbraham. Go through one set of lights and cross the railroad tracks. Continue through next set of lights and take first left onto Concord Terrace. Church is in center of the block.

From the South: North on I-91 to Broad Street Exit #4 in Springfield. You will get off I-91 onto East Columbus Avenue. Continue north on Columbus Avenue to State Street (third traffic light) and turn right. Drive for about 1 1/2 miles until you reach the median in

the road with the sign that says State Street/Wilbraham Road. Stay on the right of the median (Wilbraham Road) and go through one set of lights and cross the railroad tracks. Continue through the next set of lights and take your first left. This is Concord Terrace. The church is on the left in the center of the block.

TUMAINI PRESBYTERIAN FELLOWSHIP (new church development)

106 Emerson Street
Springfield, MA 01118

The Rev. Joseph Kimatu, Organizing Pastor

Kimatu07@hotmail.com

413/301-5291

413/384-1729 (cell)

413/301-5291 (fax)

Worship: 10:30 a.m.-12:30 p.m.

Site: MLK Center, 106 Wilbraham Rd., Springfield MA 01109

From Hartford, CT: Take I-91 North to exit 6 (downtown Springfield). Turn R onto State Street (toward the East). MLK Center is at the corner of State Street and Rutland Street.

From Worcester, MA: Take I-90 West to Exit 7. Turn L on SR 21. Cross the bridge and go R at traffic light. Take immediate L at next light and continue to Boston Rd. Boston Rd. turns into State St. MLK Center is on your left after American International College at corner of State St. and Rutland St.

STAMFORD, Connecticut

FIRST PRESBYTERIAN CHURCH

1101 Bedford Street
Stamford, CT 06905

Phone: 203/324-9522

Fax: 203/329-2548

Website: www.fishchurch.org

The Rev. Mary M. Thies, Co-Pastor

The Rev. David R. Van Dyke, Co-Pastor

Elder Ann Cox, Clerk of Session

James D. Wetherald, Minister of Music

Beth Einhorn, Secretary

mmt@fishchurch.org

drvvd@fishchurch.org

rlrunde@optonline.net

jdwetherald@sbcglobal.net

betheinhorn@snet.net

Worship: 10:00 a.m.

From the Merritt Parkway: From Exit #34 or #35 go south toward Stamford where Long Ridge Road and High Ridge Road intersect. Summer Street is one-way south. Pass Ridgeway Shopping Center on the left. Then note streets: 6th, 5th, 4th, 3rd, 2nd, 1st, Oak, Hoyt. Turn left on Hoyt then turn left again onto Bedford Street. Pass bank (slowly) and turn right into church drive, right again to parking lot behind the church.

From the Turnpike (I-95): From the east use Exit #7 (Atlantic Street). Go straight to Atlantic Street and turn right and follow for 1 mile. It becomes one way at the library and the name changes to Bedford Street. Pass the Police Station and Hoyt Street. Turn right into the church's circular drive. From New York (west) Exit #8 (Atlantic Street). Turn left and follow for 1 mile as above.

TURN OF RIVER PRES. CHURCH

49 Turn of River Road
Stamford, CT 06905

Phone: 203/322-5327

Fax: 203/322-5327

E-mail: torchurch@sbcglobal.net

Worship: 10:30 a.m.

10:00 a.m. July & August

The Rev. Jim Mahan, Pastor

Elder Janet Neulinger, Clerk of Session

Exit 35 off Merritt Parkway. Turn right off exit ramp. Proceed south on High Ridge Road approximately 1/2 mile to a gas station. Turn sharp left. Church is on the right about 1/10 mile.

WARWICK, Rhode Island

GREENWOOD COMMUNITY CHURCH, PRESBYTERIAN

805 Main Avenue
Warwick, RI 02886

Phone: 401/737-1230

Fax: 401/739-8067

E-mail: info@gccp.org

Website: www.gccp.org

[The Rev. Stephen L. Clark](#), Pastor
Elder D. Elaine Magyar, Clerk of Session
Sue Desmond, Church Secretary

Sunday School for all ages, 9:00 a.m.

9:00 & 10:30 worship

Summer: 9:30 a.m.

Greenwood Church is approximately two miles east of Route 95. From I-95-N, take Exit 12 to Rte. 113 East (Rte. 113 East becomes Main Avenue). Follow across Route 5 (Crowne Plaza Hotel will be on the right) to Main Avenue. The church building is approximately ¾ mile down Main Avenue on your left. Parking is in rear of building. If you come to the Greenwood Inn/Jefferson Boulevard, you have traveled about ½ block too far.

If coming in on I-95-S, get off at exit 12a (Route 113) and follow across Route 5 (Crowne Plaza Hotel on the right) to Main Avenue. The church is ¾ mile on the left.

WOODBURY UNION CHURCH, PRESBYTERIAN

58 Beach Avenue
P.O. Box 9484
Warwick, RI 02889

Phone: 401/737-8232

Fax: 401/738-3702

E-mail: office@woodburyuc.necoxmail.com

The Rev. Beth Appel, Pastor
Elder Ethel Thompson, Clerk of Session
Elder Ethel Thompson, Secretary

Worship: 10:00 a.m.

Sunday School 8:45 a.m.

From I-95 (North or South) take T. F. Green Airport Exit 13. Next take Post Road exit off of connector. Take left onto Post Road **North**. Go straight past Airport and Sheraton Tara Airport Hotel on your right. Take next right at light onto Airport Road (Route 117). Follow Airport Road about 2 miles to four-way traffic light at Warwick Ave. (Dave's Market will be on your right). Go straight through the light, which will put you on West Shore Road. Continue 1 ½ miles until you come to the traffic light that is at the corner of West Shore Road and Beach Avenue. The church will be on your left. There is limited parking around the church; however, there is a community parking lot diagonally across the street from the church.

WATERFORD, Connecticut

CROSSROADS PRESBYTERIAN CHURCH

70 Cross Road
Waterford, CT 06385

[The Rev. Anne Fuhrmeister](#), Pastor
Elder Jacqueline Yeung, Clerk of Session

Phone: 860/442-3693

E-mail: sec.crossroads@att.net

Website: www.crossroads-presbyterian.org

From the East (Rhode Island): Follow I-95 South to Exit 81 (Cross Road). At end of exit ramp, turn left. Go ½ mile to the traffic light at Cross Road. Turn left and pass over I-95. The church (a brick building) is on the right, approximately ¼ mile from I-95.

From the West (New Haven/Route 9): Follow I-95 North to Exit 81 (Cross Road). Note: there are no exits 77-80 on I-95. At end of exit ramp, turn left. Go to the first traffic light. Turn right. The church (a brick building) is the first building on the right, approximately ¼ mile from I-95.

From the North (Hartford): Take Route 85 South toward Waterford/New London. After passing under I-395, go 9/10ths of a mile and turn right at the traffic light (Cross Road)—just past Dunkin' Donuts. The church (a brick building) is 1½ miles on the right hand side of the street. (Approximately ¼ mile after passing over I-95.)

WEST HARTFORD, Connecticut

HARTFORD KOREAN PRESBYTERIAN CHURCH

Worshipping at Bethany Lutheran Church
1655 Boulevard
West Hartford, CT 06107

Phone: 860/643-0537

Rev. Sun-Gil Kim, Pastor

Worship: 1:00 p.m.

From the South: I-91 North to I-84 W to exit 43 toward W. Hartford Center. Turn L on Park Rd.; R on S. Main, and L on Boulevard. Church is on the left.

From the North: I-91 South to I-84 W to exit 43 toward W. Hartford Center. Turn L on Park Rd.; R on S. Main, and L on Boulevard. Church is on the left.

WESTMINSTER PRESBYTERIAN CHURCH

2080 Boulevard
West Hartford, CT 06107-2801

Phone: 860/521-6240

Fax: 860/521-5733

E-mail: office@westpresby.org

Website: www.westpresby.org

The Rev. Graham Robinson, Pastor
The Rev. gretchen Sausville, Associate Pastor
The Rev. Tracy Mehr-Muska, Parish Associate
The Rev. John Merz, Parish Associate
The Rev. Susan Power Trucksess, Parish Associate for Spiritual
Direction
Elder Sarah Kopp, Clerk of Session

Sunday Worship:

8:30 & 10:30 a.m.

July-August: 9:30 a.m.

From the east - Route I-84 west to exit 40. Turn right at first traffic light onto Ridgewood Road. Follow Ridgewood Road to intersection of Boulevard. Church is on corner of Ridgewood and Boulevard, entrance to parking lot on Ridgewood across Boulevard.

From the west - Route I-84 east to Exit 40. Turn right at traffic light at end of ramp onto Route 71 (New Britain Avenue). At next traffic light turn right, pass under I-84, go straight onto Ridgewood Road and proceed as above.

WESTERLY, Rhode Island

Dunn's Corners Community Church, Presbyterian
221 Post Road
Westerly, RI 02891

Phone: 401/322-0655

Fax: 401/322-1740

Email: clerk@dcccpc.necoxmail.com

Web: www.dunnscornerschurch.org

The Rev. James R. Glenn, III, D.Min., Pastor
Luba Preble, Office Administrator
Andrew Wallace, Music Director
Grace Urrico, Organist
Amanda Doescher, Children's Min. and Kid-Kare Director
Christine Fish, Early Learning Center Director
Elder Arthur Ganz, Clerk of Session

Saturday Contemporary Worship: 5:00 p.m.

Sunday Worship: 8:00 & 10:00 a.m.

Wednesday Worship: 6:30 p.m.

From the East: Travel south on I-95 to Exit 1 in Rhode Island. At end of ramp turn RIGHT (on Route 3) traveling through the village of Ashaway to Route 78. Turn left onto Route 78 (East) and proceed to traffic light at Route 1 (first light on 78). Turn left onto Route 1 (which is Post Road). Church is about two miles east of light, on the right just before Dunn's Corners/Bradford Road intersection.

From the West: Travel north on I-95 to Connecticut Exit 92. At the end of ramp turn right onto Route 2. Turn right onto Route 78. Turn left onto Route 1 (which is Post Road) at traffic light (first light on Route 78). Church is about 2 miles east of traffic light, on

right.

From the North: Travel South on I-91 to Hartford. In Hartford take Route 2 south and east (a LEFT exit off I-91). Follow Route 2 to Rhode Island. Turn right onto Route 78 going east. Turn left onto Route 1 (which is Post Road). Church is about 2 miles east of traffic light, on right.

WILTON, Connecticut

WILTON PRESBYTERIAN CHURCH

48 New Canaan Road
Wilton, CT 06897

Phone: 203/762-5514

Fax: 203/762-0903

E-mail: wpchurch@wiltonpresbyterian.com

Rev. Stewart MacColl, Interim Pastor
The Rev. Jane Field, Parish Associate
(Director of Spiritual Formation)
Elder Geoff Brown, Clerk of Session
Patty Connor, Office Manager

Worship: 10:00 a.m.

Summer: 9:30 a.m.

From New England - Take Exit 41 (Rt. 33) off Merritt Parkway. Turn left and go north on Rt. 33 toward Wilton for 2.7 miles. Turn left onto Wolfpit Road at traffic light (if you pass Wilton Motors Chevrolet on your right, you have gone too far). Cross 2 bridges, climb steep hill and go to 4-way stop (1.2 miles). Go straight across at 4-way stop (Wolfpit becomes New Canaan Road). The Wilton Presbyterian Church is ¼ mile on the right along with St. Matthews Episcopal Church.

From New York – Take exit 40 (Rt. 7 North) off Merritt Parkway. Go until road T's (2.9 miles) and turn left (still on Rt. 7). Go ¼ mile to traffic light and turn left onto Wolfpit Road (follow above directions from this point on.)

From Danbury – Take Rt. 7 south to Wilton Center. Turn right on Rt. 33 and cross bridge. Follow Rt. 33 to first light and fork left onto Belden Hill Road. Follow Belden Hill to the 4-way stop, turn right on New Canaan Road (Rt. 106). The Wilton Presbyterian Church is ¼ mile on the right along with St. Matthews Episcopal Church.

SELF-FORMING COMMUNITIES and FELLOWSHIPS

Hyannis, MA:

Hyannis Presbyterian Fellowship
The Rev. Alonso Dacunha
P.O. Box 1631, 320 Main Street
Hyannis, MA 02601
508/437-1454

Email: cunhaalonso@hotmail.com

Northampton, MA

NORTHAMPTON HOUSE CHURCH

Massachusetts House Church meets 1st Sundays at Helen Hills Chapel at Smith College, Northampton, MA at 1:00 p.m. Contact Heather Reichgott at heather.reichgott@gmail.com or call 413/535-6645 for more info.

Surviving Spouses of PSNE Clergy

The Rev. Stephen Crary—died 4/06

Eleanor Crary
80 Lyme Road
Hanover, NH 03755

The Rev. John Bollier—died 6/27/10

Trudy Bollier
22 North Lake Drive, Apt. B-1
Hamden, CT 06517

The Rev. Brevard Childs—died 6/07

Ann Childs
No known address

The Rev. Gary Wilburn—died 6/28/10

[Bev Wilburn](#)
P.O. Box 189010 PMB 319
Coronado, CA 92178

The Rev. Johannes Jespersen—died 11/27/05

Josephine Jespersen
245 Country View Drive
Warwick, RI 02886

The Rev. Bob Lantz—died 4/9/11

[The Rev. Diana Lantz](#)
44 Hunley Circle
Groton, CT 06340

The Rev. Carl Dudley—died 4/22/09

Shirley Dudley
400 Seabury Drive, #4181
Bloomfield, CT 06002

The Rev. Robert Alter--died 6/19/11

Ellen S. Alter
433 Bloomington Ave.
Wooster, OH 44961-2309

The Rev. Tyler Johnson—died 4/23/09

Janet Johnson
54 Atlantic Drive
Middletown, RI 02842

The Rev. Ed Danks--died 8/29/11

Coreen Danks
3700 Taylor Glen (Alzheimer's Unit)
Concord, NC 28027

The Rev. Neal Herndon—died 7/30/09

Mary Ann Herndon
30 Shady Lane
Eastham, MA 02642

DIRECTIONS TO THE PRESBYTERY OFFICE

123 Elm Street, #200
Old Saybrook, CT 06475
860/388-0874



From the East (Providence, RI; Boston, MA)

Following I-95 South, get off at exit 67 (Elm Street) in Old Saybrook.

At the end of the ramp, turn left onto Elm Street. Follow Elm Street going under the railroad trestle. We are the first building on the left after you go under the trestle.

We are located in the first building on the right as you enter the parking lot. Please enter through Unit #200.

From the West (Greenwich, CT; New York City, NY)

Following I-95 North, get off at exit 67 in Old Saybrook.

Bear right at the end of the ramp to U.S. 1 West. Follow Route 1 through 4 traffic lights. At the fourth light take a right onto Elm Street. Continue on Elm Street past Stop & Shop. We are the first building on the right after Stop & Shop.

We are located in the first building on the right as you enter the parking lot. Please enter through Unit #200.

From the North (Hartford, CT; Springfield, MA)

From I-91 South take exit 22S onto Route 9 South.

Take exit 2 and turn right onto Route 154. At the second traffic light Route 154 becomes U.S. Route 1 West. Follow Route 1 through 4 traffic lights. At the fourth light take a right onto Elm Street. Follow Elm past Stop & Shop and turn into "123 Elm Street" which is the first building after the vacant field adjacent to Stop & Shop.

We are located in the first building on the right as you enter the parking lot. Please enter through Unit #200.

MERCY CENTER AT MADISON

167 Neck Road
Madison, CT 06443
203/245-0401



From the West: I-95 North to exit 59 (Goose Lane). Turn right off exit. At stoplight, turn left onto Route 1. Go 2 miles to Neck Road on the right. A bit before Neck Road is a Mobil Station on the right. Turn right onto Neck Road. Follow Neck Road (which makes a sharp curve to the right) .9 mile. There will be two cement pillars on the left. Turn in and follow drive back to the Mercy Center.

From the East: I-95 South to exit 61 (Route 79). Turn left off the exit toward Route 1. Go .7 mile to a stoplight at the junction of Route 1. Turn right onto Route 1. Go 1.6 miles to Neck Road on the left. On the corner of Neck Road and Route 1 is a red building—Old School House Store. Turn left onto Neck Road. Follow Neck Road (which makes a sharp curve to the right) .9 mile. There will be two cement pillars on the left. Turn in and follow drive back to Mercy Center.



INDEX

Church Development.....	17
Churches.....	56
Clergy	31
Clusters.....	6
Directions to Mercy Center	71
Directions to PSNE	70
Ecclesiastical Occupation Codes	30
Ecclesiastical Relations	22
Frequently Used Numbers	4
Meeting Dates.....	4
Ministry, Committee on	18
Mission Statement	2
Nominations	23
Officers/Staff.....	3
Past Moderators.....	7
Permanent Judicial Commission.....	24
Personnel	25
Prayer Calendar	9
Presbytery Council	15
Presbytery Structure	5
Preparation for Ministry	21
Reference Codes for Presbytery.....	14
Self-Forming Communities and Fellowships	68
Serving Synod/GA	8
Social Justice	26
Surviving Spouses.....	69
Staff.....	3
Stewardship & Mission	27
Trustees	28
Youth Ministries	29